

For Research Use Only

CLDN17 Recombinant monoclonal antibody, PBS Only

Catalog Number:86936-1-PBS



Basic Information

Catalog Number:

86936-1-PBS

Source:

Rabbit

Isotype:

IgG

GenBank Accession Number:

BC101503

GeneID (NCBI):

26285

UNIPROT ID:

P56750

Full Name:

claudin 17

Calculated MW:

224 aa, 25 kDa

Observed MW:

27 kDa

Purification Method:

Protein A purification

CloneNo.:

251114D9

Applications

Tested Applications:

WB, Indirect ELISA

Species Specificity:

human

Background Information

CLDN17 (Claudin-17) is a 27-kDa tetra-transmembrane protein belonging to the claudin family of tight-junction components. It forms paracellular ion-selective pores and is predominantly expressed in renal proximal tubule epithelium, gastrointestinal tract, and lung alveolar epithelium, where it contributes to Na⁺/Cl⁻ permeability and acid-base homeostasis.

Storage

Storage:

Store at -80°C.

The product is shipped with ice packs. Upon receipt, store it immediately at -80°C

Storage Buffer:

PBS only, pH7.3

For technical support and original validation data for this product please contact:

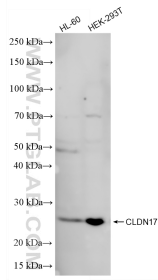
T: 4006900926

E: Proteintech-CN@ptglab.com

W: ptgcn.com

This product is exclusively available under Proteintech Group brand and is not available to purchase from any other manufacturer.

Selected Validation Data



Various lysates were subjected to SDS PAGE followed by western blot with 86936-1-RR (CLDN17 antibody) at dilution of 1:5000 incubated at room temperature for 1.5 hours. This data was developed using the same antibody clone with 86936-1-PBS in a different storage buffer formulation.