

For Research Use Only

# PEG10 Recombinant monoclonal antibody, PBS Only (Detector)

Catalog Number:86928-5-PBS



## Basic Information

Catalog Number:

86928-5-PBS

Source:

Rabbit

Isotype:

IgG

Immunogen Catalog Number:

AG5754

GenBank Accession Number:

BC050659

GeneID (NCBI):

23089

UNIPROT ID:

Q86TG7

Full Name:

paternally expressed 10

Calculated MW:

80 kDa

Purification Method:

Protein A purification

CloneNo.:

251980H1

## Applications

Tested Applications:

Sandwich ELISA, Indirect ELISA

Species Specificity:

human

## Background Information

### Storage

Storage:

Store at -80°C.

The product is shipped with ice packs. Upon receipt, store it immediately at -80°C

Storage Buffer:

PBS only, pH7.3

For technical support and original validation data for this product please contact:

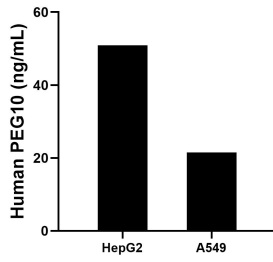
T: 4006900926

E: Proteintech-CN@ptglab.com

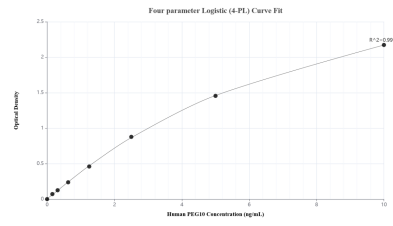
W: ptgcn.com

This product is exclusively available under Proteintech Group brand and is not available to purchase from any other manufacturer.

## Selected Validation Data



The mean PEG10 concentration was determined to be 50.86 ng/mL in HepG2 cell extract based on a 1.20 mg/mL extract load and 21.53 ng/mL in A549 cell extract based on a 1.20 mg/mL extract load.



Sandwich ELISA standard curve of MP02775-2, Human PEG10 Recombinant Matched Antibody Pair - PBS only. 86928-6-PBS was coated to a plate as the capture antibody and incubated with serial dilutions of standard Ag5754. 86928-5-PBS was HRP conjugated as the detection antibody. Range: 0.156-10 ng/mL.