

For Research Use Only

PEG10 Recombinant monoclonal antibody

Catalog Number:86928-4-RR



Basic Information

Catalog Number: 86928-4-RR	GenBank Accession Number: BC050659	Purification Method: Protein A purification
Source: Rabbit	GeneID (NCBI): 23089	CloneNo.: 251980A2
Isotype: IgG	UNIPROT ID: Q86TG7	Recommended Dilutions: WB: 1:5000-1:50000
Immunogen Catalog Number: AG5754	Full Name: paternally expressed 10	
	Calculated MW: 80 kDa	
	Observed MW: 50 kDa, 100 kDa	

Applications

Tested Applications: WB, ELISA	Positive Controls: WB : HeLa cells, HepG2 cells
Species Specificity: human	

Background Information

Paternally expressed imprinted gene 10 (PEG10) is an evolutionarily conserved HERV gene belonging to the Ty3/Gypsy family of retrotransposons. The mRNA of PEG10 encodes at least two protein isoforms: the major PEG10 protein product reading frame 1 (RF1-PEG10, ~50 kDa) and reading frames 1 and 2 (RF1/RF2-PEG10, ~100 kDa), which are translated by a typical retroviral-1 ribosomal frameshift mechanism. PEG10 is strongly expressed in placenta, ovary and testis as well as somatic adult organs including brain, kidney and lung. Researches on mice suggest that PEG10 plays an important role in placenta formation and adipocyte differentiation, and its knockout can cause embryonic lethality.(PMID: 30123090, PMID: 32244497)

Storage

Storage:
Store at -20°C. Stable for one year after shipment.
Storage Buffer:
PBS with 0.02% sodium azide and 50% glycerol, pH7.3
Aliquoting is unnecessary for -20°C storage

For technical support and original validation data for this product please contact:

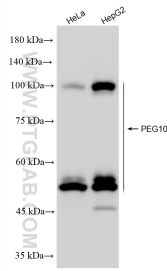
T: 4006900926

E: Proteintech-CN@ptglab.com

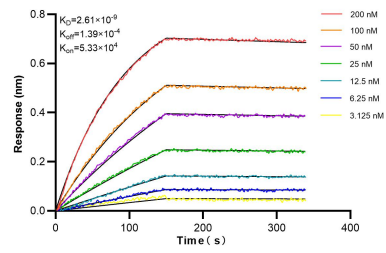
W: ptgcn.com

This product is exclusively available under Proteintech Group brand and is not available to purchase from any other manufacturer.

Selected Validation Data



Various lysates were subjected to SDS PAGE followed by western blot with 86928-4-RR (PEG10 antibody) at dilution of 1:10000 incubated at room temperature for 1.5 hours.



Biolayer interferometry (BLI) kinetic assays of 86928-4-RR against Human PEG10 were performed. The affinity constant is 2.61 nM.