

For Research Use Only

PEG10 Recombinant monoclonal antibody, PBS Only (Capture)

Catalog Number: 86928-2-PBS



Basic Information

Catalog Number:

86928-2-PBS

Source:

Rabbit

Isotype:

IgG

Immunogen Catalog Number:

AG5754

GenBank Accession Number:

BC050659

GeneID (NCBI):

23089

UNIPROT ID:

Q86TG7

Full Name:

paternally expressed 10

Calculated MW:

80 kDa

Purification Method:

Protein A purification

CloneNo.:

251980B1

Applications

Tested Applications:

Cytometric bead array, Indirect ELISA

Species Specificity:

human

Background Information

Storage

Storage:

Store at -80°C.

The product is shipped with ice packs. Upon receipt, store it immediately at -80°C

Storage Buffer:

PBS only, pH7.3

For technical support and original validation data for this product please contact:

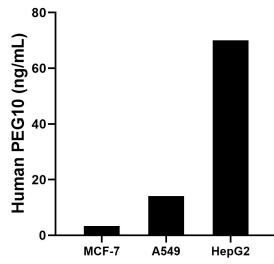
T: 4006900926

E: Proteintech-CN@ptglab.com

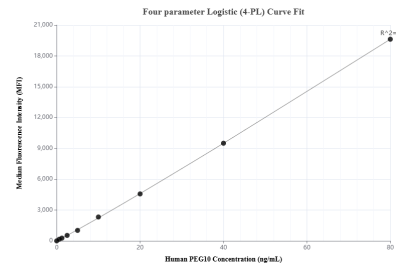
W: ptgcn.com

This product is exclusively available under Proteintech Group brand and is not available to purchase from any other manufacturer.

Selected Validation Data



The mean PEG10 concentration was determined to be 3.3 ng/mL in MCF-7 cell extract based on a 1.2 mg/mL extract load, 14.1 ng/mL in A549 cell extract based on a 1.2 mg/mL extract load, 70.0 ng/mL in HepG2 cell extract based on a 1.2 mg/mL extract load.



Cytometric bead array standard curve of MP02775-1, PEG10 Recombinant Matched Antibody Pair, PBS Only. Capture antibody: 86928-2-PBS. Detection antibody: 86928-1-PBS. Standard: Ag5754. Range: 0.625-80 ng/mL.