

For Research Use Only

# Rat GM-CSF Recombinant monoclonal antibody, PBS Only

Catalog Number: 86923-1-PBS



## Basic Information

<b>Catalog Number:</b> 86923-1-PBS	<b>GenBank Accession Number:</b> NM_053852.1	<b>Purification Method:</b> Protein A purification
<b>Source:</b> Rabbit	<b>GeneID (NCBI):</b> 116630	<b>CloneNo.:</b> 243117B1
<b>Isotype:</b> IgG	<b>UNIPROT ID:</b> P48750	
<b>Immunogen Catalog Number:</b> EG3202	<b>Full Name:</b> colony stimulating factor 2 (granulocyte-macrophage)	
	<b>Calculated MW:</b> 17 kDa	

## Applications

**Tested Applications:**  
WB, Indirect ELISA

**Species Specificity:**  
rat

## Background Information

Gm-csf, also known as Csf2, is a monomeric glycoprotein secreted by macrophages, T cells, mast cells, NK cells, endothelial cells and fibroblasts that functions as a cytokine. Gm-csf was first characterized as a hematopoietic growth factor that stimulates the proliferation of myeloid cells from bone-marrow progenitors. Gm-csf is now recognized as an important activating and differentiation factor for immune cells, and is essential for a wide range of biological processes in both innate and adaptive immunity. Gm-csf has been shown to protect against pulmonary infection and intestinal inflammation, and it is necessary for normal pulmonary and colon homeostasis.

## Storage

**Storage:**  
Store at -80°C.  
**The product is shipped with ice packs. Upon receipt, store it immediately at -80°C**

**Storage Buffer:**  
PBS only, pH7.3

For technical support and original validation data for this product please contact:

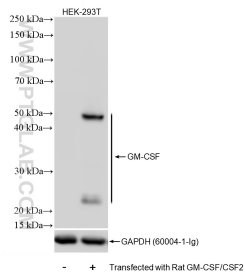
T: 4006900926

E: [Proteintech-CN@ptglab.com](mailto:Proteintech-CN@ptglab.com)

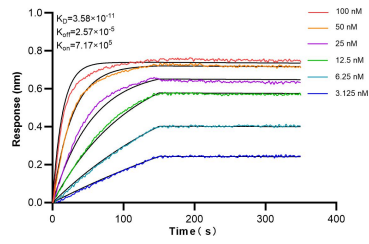
W: [ptgcn.com](http://ptgcn.com)

**This product is exclusively available under Proteintech Group brand and is not available to purchase from any other manufacturer.**

## Selected Validation Data



Non-transfected and rat GM-CS Transfected HEK-293T cells were subjected to SDS PAGE followed by western blot with 86923-1-RR (GM-CSF/CSF2 antibody) at dilution of 1:1000 incubated at room temperature for 1.5 hours. This data was developed using the same antibody clone with 86923-1-PBS in a different storage buffer formulation.



Bilayer interferometry (BLI) kinetic assays of 86923-1-RR against Rat GM-CSF were performed. The affinity constant is 35.8 pM.