

For Research Use Only

Fibrinogen alpha chain Recombinant monoclonal antibody, PBS Only (Capture)

Catalog Number: 86913-5-PBS



Basic Information

Catalog Number:

86913-5-PBS

Source:

Rabbit

Isotype:

IgG

Immunogen Catalog Number:

EG4643

GenBank Accession Number:

NM_000508.4

GeneID (NCBI):

2243

UNIPROT ID:

P02671-1

Full Name:

fibrinogen alpha chain

Calculated MW:

95kDa

Purification Method:

Protein A purification

CloneNo.:

251931B1

Applications

Tested Applications:

Sandwich ELISA, Indirect ELISA

Species Specificity:

human

Background Information

Storage

Storage:

Store at -80°C.

The product is shipped with ice packs. Upon receipt, store it immediately at -80°C

Storage Buffer:

PBS only, pH7.3

For technical support and original validation data for this product please contact:

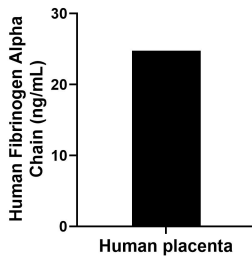
T: 4006900926

E: Proteintech-CN@ptglab.com

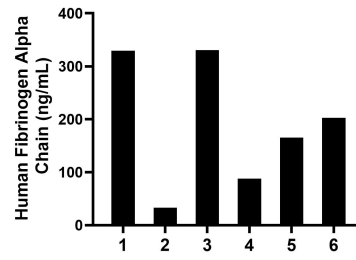
W: ptgcn.com

This product is exclusively available under Proteintech Group brand and is not available to purchase from any other manufacturer.

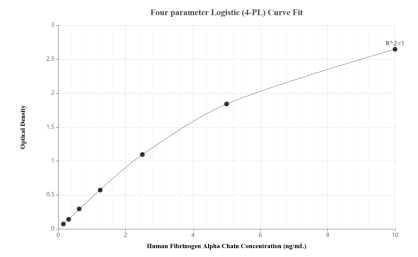
Selected Validation Data



The mean Fibrinogen Alpha Chain concentration was determined to be 24.76 ng/mL in human placenta extract based on a 3.80 mg/mL extract load.



Urine of six individual healthy human donors was measured. The Fibrinogen Alpha Chain concentration of detected samples was determined to be 191.44 ng/mL with a range of 33.10-330.50 ng/mL.



Sandwich ELISA standard curve of MP02768-2, Human Fibrinogen Alpha Chain Recombinant Matched Antibody Pair - PBS only. 86913-5-PBS was coated to a plate as the capture antibody and incubated with serial dilutions of standard Eg4643. 86913-4-PBS was HRP conjugated as the detection antibody. Range: 0.156-10 ng/mL.