

For Research Use Only

# CGREF1 Recombinant monoclonal antibody

Catalog Number:86905-1-RR



## Basic Information

<b>Catalog Number:</b> 86905-1-RR	<b>GenBank Accession Number:</b> BC034764	<b>Purification Method:</b> Protein A purification
<b>Source:</b> Rabbit	<b>GeneID (NCBI):</b> 10669	<b>CloneNo.:</b> 251879C5
<b>Isotype:</b> IgG	<b>UNIPROT ID:</b> Q99674	<b>Recommended Dilutions:</b> WB: 1:5000-1:50000
<b>Immunogen Catalog Number:</b> AG35664	<b>Full Name:</b> cell growth regulator with EF-hand domain 1	
	<b>Calculated MW:</b> 301 aa, 32 kDa	
	<b>Observed MW:</b> 20-22 kDa	

## Applications

<b>Tested Applications:</b> WB, ELISA	<b>Positive Controls:</b>
<b>Species Specificity:</b> human	WB : mouse brain tissue, rat brain tissue, mouse cerebellum tissue

## Background Information

CGREF1, also known as CGR11, is predicted to enable calcium ion binding activity and to be involved in negative regulation of cell population proliferation. Human GREF1 protein has 4 clustered 17-amino acid repeats within the C terminus, suggesting a structure resembling 4 alpha-helical domains interrupted by distinct turns. Northern blot analysis of rat tissues demonstrated expression of CGR11 predominantly in the whole brain and kidney, with limited expression in heart, lung, liver, and skeletal muscle and no expression in spleen and testis.

## Storage

**Storage:**  
Store at -20°C. Stable for one year after shipment.  
**Storage Buffer:**  
PBS with 0.02% sodium azide and 50% glycerol, pH7.3  
Aliquoting is unnecessary for -20°C storage

For technical support and original validation data for this product please contact:

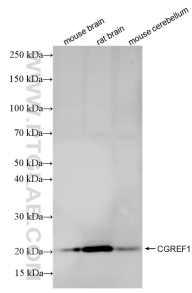
T: 4006900926

E: [Proteintech-CN@ptglab.com](mailto:Proteintech-CN@ptglab.com)

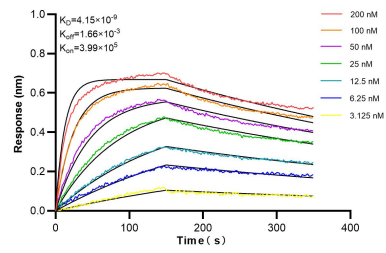
W: [ptgcn.com](http://ptgcn.com)

**This product is exclusively available under Proteintech Group brand and is not available to purchase from any other manufacturer.**

## Selected Validation Data



Various lysates were subjected to SDS PAGE followed by western blot with 86905-1-RR (CGREF1 antibody) at dilution of 1:10000 incubated at room temperature for 1.5 hours.



Biolayer interferometry (BLI) kinetic assays of 86905-1-RR against Human CGREF1 were performed. The affinity constant is 4.15 nM.