

For Research Use Only

MTX2 Recombinant monoclonal antibody, PBS Only (Capture)

Catalog Number: 86899-3-PBS



Basic Information

Catalog Number:

86899-3-PBS

Source:

Rabbit

Isotype:

IgG

Immunogen Catalog Number:

AG2181

GenBank Accession Number:

BC017271

GeneID (NCBI):

10651

UNIPROT ID:

O75431

Full Name:

metaxin 2

Calculated MW:

263 aa, 30 kDa

Purification Method:

Protein A purification

CloneNo.:

251514A10

Applications

Tested Applications:

Cytometric bead array, Indirect ELISA

Species Specificity:

human

Background Information

Storage

Storage:

Store at -80°C.

The product is shipped with ice packs. Upon receipt, store it immediately at -80°C

Storage Buffer:

PBS only, pH7.3

For technical support and original validation data for this product please contact:

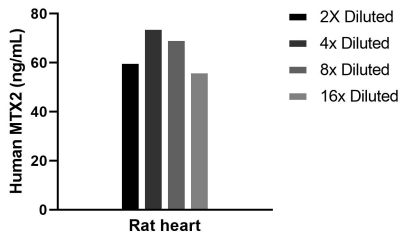
T: 4006900926

E: Proteintech-CN@ptglab.com

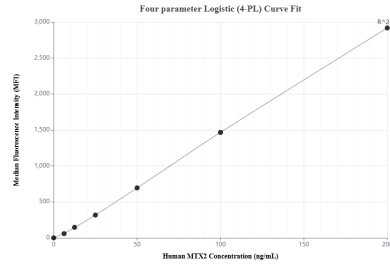
W: ptgcn.com

This product is exclusively available under Proteintech Group brand and is not available to purchase from any other manufacturer.

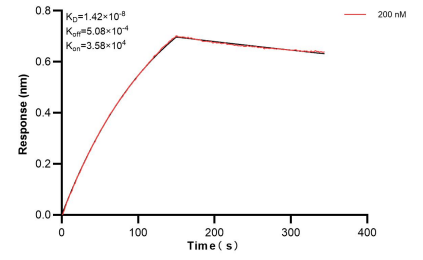
Selected Validation Data



The mean MTX2 concentration was determined to be 65.1 ng/mL in Rat heart tissue extract based on a 3.0 mg/mL extract load.



Cytometric bead array standard curve of MP02767-1, MTX2 Recombinant Matched Antibody Pair, PBS Only. Capture antibody: 86899-3-PBS. Detection antibody: 86899-1-PBS. Standard: Ag2181. Range: 6.25-200 ng/mL.



Bi-layer interferometry (BLI) kinetic assay of 86899-3-PBS against Human MTX2 was performed. The affinity constant is 14.2 nM.