

For Research Use Only

MTX2 Recombinant monoclonal antibody, PBS Only (Detector)

Catalog Number:86899-1-PBS



Basic Information

Catalog Number: 86899-1-PBS	GenBank Accession Number: BC017271	Purification Method: Protein A purification
Source: Rabbit	GeneID (NCBI): 10651	CloneNo.: 251514F3
Isotype: IgG	UNIPROT ID: O75431	
Immunogen Catalog Number: AG2181	Full Name: metaxin 2	
	Calculated MW: 263 aa, 30 kDa	
	Observed MW: 25-29 kDa	

Applications

Tested Applications:
WB, IF/ICC, Cytometric bead array, Indirect ELISA

Species Specificity:
human, mouse, rat

Background Information

Storage

Storage:
Store at -80°C.
The product is shipped with ice packs. Upon receipt, store it immediately at -80°C

Storage Buffer:
PBS only, pH7.3

For technical support and original validation data for this product please contact:

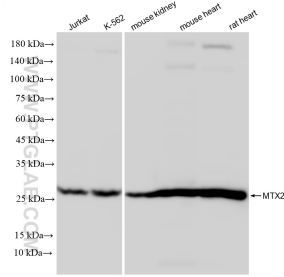
T: 4006900926

E: Proteintech-CN@ptglab.com

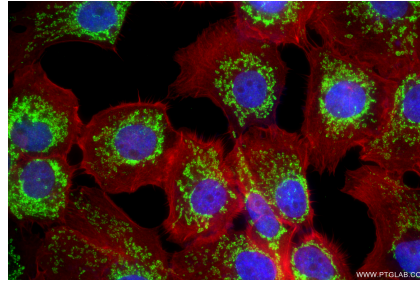
W: ptgcn.com

This product is exclusively available under Proteintech Group brand and is not available to purchase from any other manufacturer.

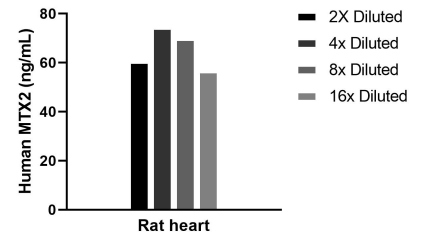
Selected Validation Data



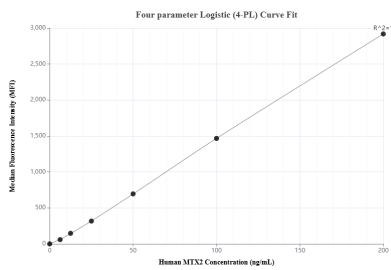
Various lysates were subjected to SDS PAGE followed by western blot with 86899-1-RR (MTX2 antibody) at dilution of 1:10000 incubated at room temperature for 1.5 hours. This data was developed using the same antibody clone with 86899-1-PBS in a different storage buffer formulation.



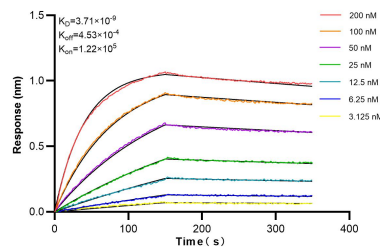
Immunofluorescent analysis of (4% PFA) fixed A431 cells using MTX2 antibody (86899-1-RR, Clone: 251514F3) at dilution of 1:800 and CoraLite® 488-Conjugated Goat Anti-Rabbit IgG(H+L) (SA00013-2), CL594-Phalloidin (red). This data was developed using the same antibody clone with 86899-1-PBS in a different storage buffer formulation.



The mean MTX2 concentration was determined to be 65.1 ng/mL in Rat heart tissue extract based on a 3.0 mg/mL extract load.



Cytometric bead array standard curve of MP02767-1, MTX2 Recombinant Matched Antibody Pair, PBS Only. Capture antibody: 86899-3-PBS. Detection antibody: 86899-1-PBS. Standard: Ag2181. Range: 6.25-200 ng/mL



Biolayer interferometry (BLI) kinetic assays of 86899-1-RR against Human MTX2 were performed. The affinity constant is 3.71 nM.