

For Research Use Only

CCT2 Recombinant monoclonal antibody, PBS Only (Detector)

Catalog Number:86898-1-PBS



Basic Information

Catalog Number:

86898-1-PBS

Source:

Rabbit

Isotype:

IgG

Immunogen Catalog Number:

AG19264

GenBank Accession Number:

BC113516

GeneID (NCBI):

10576

UNIPROT ID:

P78371

Full Name:

chaperonin containing TCP1, subunit 2 (beta)

Calculated MW:

535 aa, 57 kDa

Purification Method:

Protein A purification

CloneNo.:

251618D3

Applications

Tested Applications:

Sandwich ELISA, Indirect ELISA

Species Specificity:

human

Background Information

Storage

Storage:

Store at -80°C.

The product is shipped with ice packs. Upon receipt, store it immediately at -80°C

Storage Buffer:

PBS only, pH7.3

For technical support and original validation data for this product please contact:

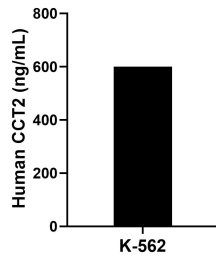
T: 4006900926

E: Proteintech-CN@ptglab.com

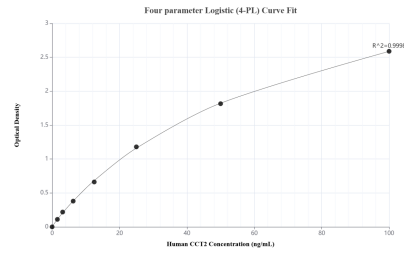
W: ptgcn.com

This product is exclusively available under Proteintech Group brand and is not available to purchase from any other manufacturer.

Selected Validation Data



The mean CCT2 concentration was determined to be 600.11 ng/mL in K-562 cell extract based on a 1.20 mg/mL extract load.



Sandwich ELISA standard curve of MP02720-1, Human CCT2 Recombinant Matched Antibody Pair - PBS only. 86898-2-PBS was coated to a plate as the capture antibody and incubated with serial dilutions of standard Ag19264. 86898-1-PBS was HRP conjugated as the detection antibody. Range: 1.56-100 ng/mL