

For Research Use Only

SLC2A9 Recombinant monoclonal antibody, PBS Only (Capture)

Catalog Number: 86896-2-PBS



Basic Information

Catalog Number:

86896-2-PBS

Source:

Rabbit

Isotype:

IgG

GenBank Accession Number:

BC018897

GeneID (NCBI):

56606

UNIPROT ID:

Q9NRM0

Full Name:

solute carrier family 2 (facilitated glucose transporter), member 9

Calculated MW:

540 aa, 59 kDa

Purification Method:

Protein A purification

CloneNo.:

250641C11

Applications

Tested Applications:

Sandwich ELISA, Indirect ELISA

Species Specificity:

human

Background Information

Storage

Storage:

Store at -80°C.

The product is shipped with ice packs. Upon receipt, store it immediately at -80°C

Storage Buffer:

PBS only, pH7.3

For technical support and original validation data for this product please contact:

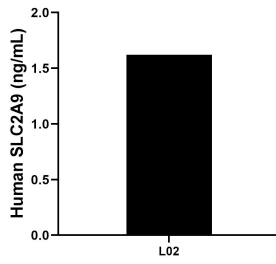
T: 4006900926

E: Proteintech-CN@ptglab.com

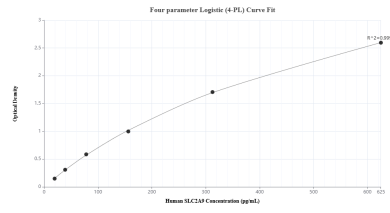
W: ptgcn.com

This product is exclusively available under Proteintech Group brand and is not available to purchase from any other manufacturer.

Selected Validation Data



The mean SLC2A9 concentration was determined to be 1.62 ng/mL in L02 cell extract based on a 1.2 mg/mL extract load.



Sandwich ELISA standard curve of MP02714-1, Human SLC2A9 Recombinant Matched Antibody Pair - PBS only. 86896-2-PBS was coated to a plate as the capture antibody and incubated with serial dilutions of standard SY02501. 86896-1-PBS was HRP conjugated as the detection antibody. Range: 19.5-625 pg/mL