

For Research Use Only

# SLC2A9 Recombinant monoclonal antibody, PBS Only (Detector)

Catalog Number: 86896-1-PBS



## Basic Information

Catalog Number:

86896-1-PBS

Source:

Rabbit

Isotype:

IgG

GenBank Accession Number:

BC018897

GeneID (NCBI):

56606

UNIPROT ID:

Q9NRM0

Full Name:

solute carrier family 2 (facilitated glucose transporter), member 9

Calculated MW:

540 aa, 59 kDa

Purification Method:

Protein A purification

CloneNo.:

250641G12

## Applications

Tested Applications:

Sandwich ELISA, Indirect ELISA

Species Specificity:

human

## Background Information

### Storage

Storage:

Store at -80°C.

**The product is shipped with ice packs. Upon receipt, store it immediately at -80°C**

Storage Buffer:

PBS only, pH7.3

For technical support and original validation data for this product please contact:

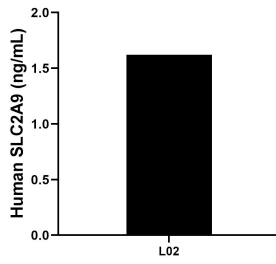
T: 4006900926

E: [Proteintech-CN@ptglab.com](mailto:Proteintech-CN@ptglab.com)

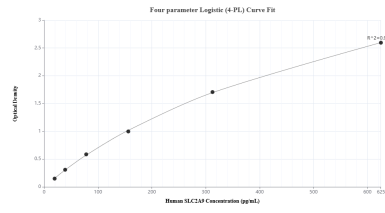
W: [ptgcn.com](http://ptgcn.com)

**This product is exclusively available under Proteintech Group brand and is not available to purchase from any other manufacturer.**

## Selected Validation Data



The mean SLC2A9 concentration was determined to be 1.62 ng/mL in L02 cell extract based on a 1.2 mg/mL extract load.



Sandwich ELISA standard curve of MP02714-1, Human SLC2A9 Recombinant Matched Antibody Pair - PBS only. 86896-2-PBS was coated to a plate as the capture antibody and incubated with serial dilutions of standard SY02501. 86896-1-PBS was HRP conjugated as the detection antibody. Range: 19.5-625 pg/mL