

For Research Use Only

DDX41 Recombinant monoclonal antibody, PBS Only (Capture)

Catalog Number: 86894-1-PBS



Basic Information

Catalog Number: 86894-1-PBS	GenBank Accession Number: BC015476	Purification Method: Protein A purification
Source: Rabbit	GeneID (NCBI): 51428	CloneNo.: 252011G10
Isotype: IgG	UNIPROT ID: Q9UJV9	
Immunogen Catalog Number: AG26593	Full Name: DEAD (Asp-Glu-Ala-Asp) box polypeptide 41	
	Calculated MW: 70 kDa	
	Observed MW: 70 kDa	

Applications

Tested Applications:
WB, IF/ICC, Cytometric bead array, Indirect ELISA

Species Specificity:
human, mouse, rat

Background Information

DDX41, also named as DEAD box protein abstract homolog, is a 622 amino acid protein, which is a probable ATP-dependent RNA helicase. DDX41 is required during post-transcriptional gene expression and may be involved in pre-mRNA splicing.

Storage

Storage:
Store at -80°C.
The product is shipped with ice packs. Upon receipt, store it immediately at -80°C

Storage Buffer:
PBS only, pH7.3

For technical support and original validation data for this product please contact:

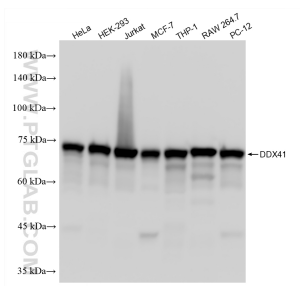
T: 4006900926

E: Proteintech-CN@ptglab.com

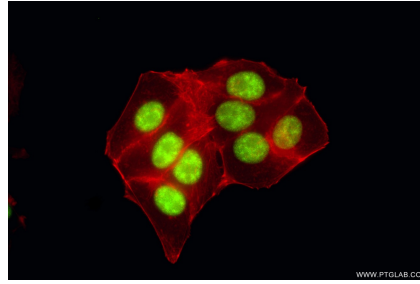
W: ptgcn.com

This product is exclusively available under Proteintech Group brand and is not available to purchase from any other manufacturer.

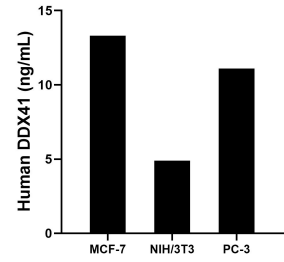
Selected Validation Data



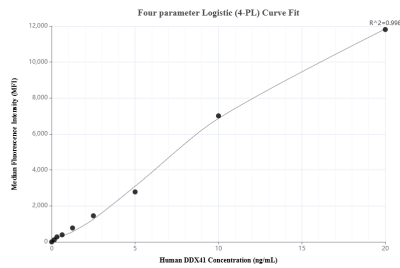
Various lysates were subjected to SDS PAGE followed by western blot with 86894-1-RR (DDX41 antibody) at dilution of 1:5000 incubated at room temperature for 1.5 hours. This data was developed using the same antibody clone with 86894-1-PBS in a different storage buffer formulation.



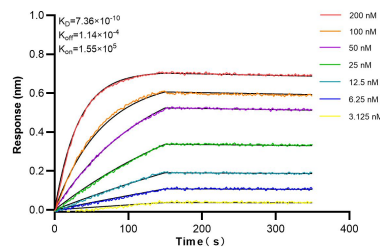
Immunofluorescent analysis of (4% PFA) fixed MCF-7 cells using DDX41 antibody (86894-1-RR, Clone: 252011G10) at dilution of 1:1000 and CoraLite® 488-Conjugated Goat Anti-Rabbit IgG(H+L) (SA00013-2), CL594-Phalloidin (red). This data was developed using the same antibody clone with 86894-1-PBS in a different storage buffer formulation.



The mean DDX41 concentration was determined to be 13.3 ng/mL in MCF-7 cell extract based on a 1.3 mg/mL extract load, 4.9 ng/mL in NIH/3T3 cell extract based on a 1.2 mg/mL extract load, 11.1 ng/mL in PC-3 cell extract based on a 1.2 mg/mL extract load.



Cytometric bead array standard curve of MP02765-1, DDX41 Recombinant Matched Antibody Pair, PBS Only. Capture antibody: 86894-1-PBS. Detection antibody: 86894-2-PBS. Standard: Ag26593. Range: 0.156-20 ng/mL



Biolayer interferometry (BLI) kinetic assays of 86894-1-RR against Human DDX41 were performed. The affinity constant is 0.736 nM.