

For Research Use Only

# Di-Methyl-Histone H3 (Lys27) Recombinant monoclonal antibody

Catalog Number: 86890-2-RR



## Basic Information

Catalog Number:

86890-2-RR

Source:

Rabbit

Isotype:

IgG

GenBank Accession Number:

BC066245

GeneID (NCBI):

8350

UNIPROT ID:

P68431

Full Name:

histone cluster 1, H3a

Observed MW:

17 kDa

Purification Method:

Protein A purification

CloneNo.:

251846E11

Recommended Dilutions:

WB: 1:500-1:2000

IF/ICC: 1:500-1:2000

Dot Blot: 1:500-1:2000

## Applications

Tested Applications:

WB, IF/ICC, Dot Blot, ELISA

Species Specificity:

human, mouse, rat

Positive Controls:

WB : HeLa cells, NIH/3T3 cells, HEK-293T cells, K-562 cells, MCF-7 cells, mouse liver tissue, rat liver tissue

IF/ICC : HeLa cells,

Dot Blot : / / ,

## Background Information

### Storage

Storage:

Store at -20°C. Stable for one year after shipment.

Storage Buffer:

PBS with 0.02% sodium azide and 50% glycerol, pH7.3

Aliquoting is unnecessary for -20°C storage

For technical support and original validation data for this product please contact:

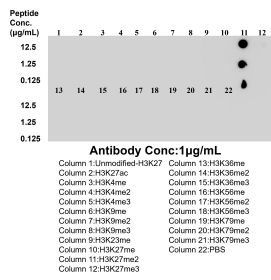
T: 4006900926

E: [Proteintech-CN@ptglab.com](mailto:Proteintech-CN@ptglab.com)

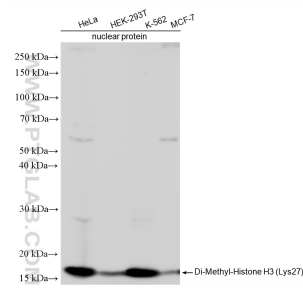
W: [ptgcn.com](http://ptgcn.com)

This product is exclusively available under Proteintech Group brand and is not available to purchase from any other manufacturer.

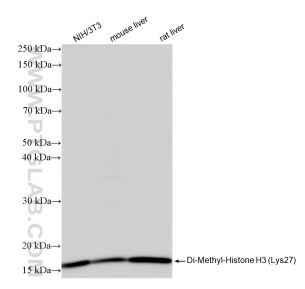
## Selected Validation Data



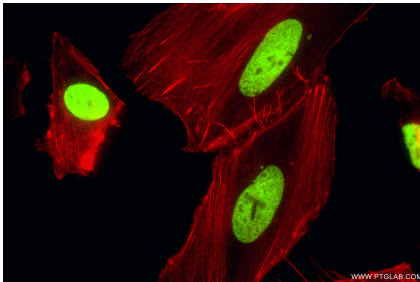
Dot blot analysis was used to confirm the specificity of 86890-2-RR Di-Methyl-Histone H3 (Lys27) antibody. peptides were spotted onto NC and probed with antibody at 1 µg/ml. The amount of peptide ( µ g/ml) spotted is indicated next to each row.



Various lysates were subjected to SDS PAGE followed by western blot with 86890-2-RR (Di-Methyl-Histone H3 (Lys27) antibody) at dilution of 1:1000 incubated at room temperature for 1.5 hours.



Various lysates were subjected to SDS PAGE followed by western blot with 86890-2-RR (Di-Methyl-Histone H3 (Lys27) antibody) at dilution of 1:1000 incubated at room temperature for 1.5 hours.



Immunofluorescent analysis of (4% PFA) fixed HeLa cells using Di-Methyl-Histone H3 (Lys27) antibody (86890-2-RR, Clone: 251846E11 ) at dilution of 1:1000 and Coralite®488-Conjugated Goat Anti-Rabbit IgG(H+L) (SA00013-2), CL594-Phalloidin (red).