

For Research Use Only

# PPP1R10 Recombinant monoclonal antibody

Catalog Number: 86888-1-RR



## Basic Information

<b>Catalog Number:</b> 86888-1-RR	<b>GenBank Accession Number:</b> BC150310	<b>Purification Method:</b> Protein A purification
<b>Source:</b> Rabbit	<b>GeneID (NCBI):</b> 5514	<b>CloneNo.:</b> 251508G3
<b>Isotype:</b> IgG	<b>UNIPROT ID:</b> Q96QCO	<b>Recommended Dilutions:</b> WB: 1:5000-1:50000 IF/ICC: 1:500-1:2000
<b>Immunogen Catalog Number:</b> AG20091	<b>Full Name:</b> protein phosphatase 1, regulatory (inhibitor) subunit 10	
	<b>Calculated MW:</b> 940 aa, 99 kDa	
	<b>Observed MW:</b> 99-110 kDa	

## Applications

<b>Tested Applications:</b> WB, IF/ICC, ELISA	<b>Positive Controls:</b>
<b>Species Specificity:</b> human	<b>WB :</b> HeLa cells, HepG2 cells <b>IF/ICC :</b> HepG2 cells,

## Background Information

### Storage

**Storage:**  
Store at -20°C. Stable for one year after shipment.  
**Storage Buffer:**  
PBS with 0.02% sodium azide and 50% glycerol, pH7.3  
Aliquoting is unnecessary for -20°C storage

For technical support and original validation data for this product please contact:

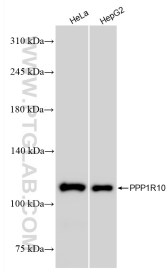
T: 4006900926

E: [Proteintech-CN@ptglab.com](mailto:Proteintech-CN@ptglab.com)

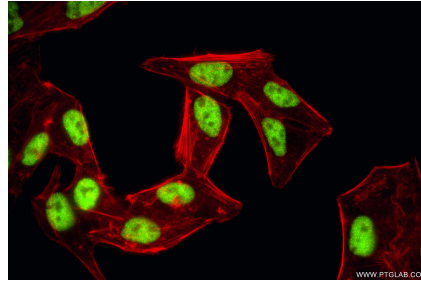
W: [ptgcn.com](http://ptgcn.com)

This product is exclusively available under Proteintech Group brand and is not available to purchase from any other manufacturer.

## Selected Validation Data



Various lysates were subjected to SDS PAGE followed by western blot with 86888-1-RR (PPP1R10 antibody) at dilution of 1:10000 incubated at room temperature for 1.5 hours.



Immunofluorescent analysis of (4% PFA) fixed HepG2 cells using PPP1R10 antibody (86888-1-RR, Clone: 251508G3 ) at dilution of 1:1000 and CoraLite® 488-Conjugated Goat Anti-Rabbit IgG(H+L) (SA00013-2), CL594-Phalloidin (red).