

For Research Use Only

CCDC28A Recombinant monoclonal antibody, PBS Only (Capture)

Catalog Number: 86883-2-PBS



Basic Information

Catalog Number: 86883-2-PBS	GenBank Accession Number: BC000758	Purification Method: Protein A purification
Source: Rabbit	GeneID (NCBI): 25901	CloneNo.: 251922A12
Isotype: IgG	UNIPROT ID: Q8IWP9	
Immunogen Catalog Number: AG6529	Full Name: coiled-coil domain containing 28A	
	Calculated MW: 30 kDa	

Applications

Tested Applications:
Cytometric bead array, Indirect ELISA

Species Specificity:
human

Background Information

Storage

Storage:
Store at -80°C.
The product is shipped with ice packs. Upon receipt, store it immediately at -80°C

Storage Buffer:
PBS only, pH7.3

For technical support and original validation data for this product please contact:

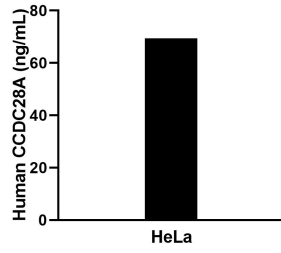
T: 4006900926

E: Proteintech-CN@ptglab.com

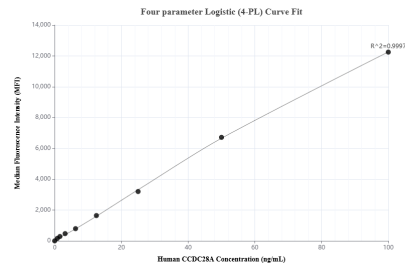
W: ptgcn.com

This product is exclusively available under Proteintech Group brand and is not available to purchase from any other manufacturer.

Selected Validation Data



The mean CCDC28A concentration was determined to be 70.2 ng/mL in HeLa cell extract based on a 1.2 mg/mL extract load.



Cytometric bead array standard curve of MP02764-1, CCDC28A Recombinant Matched Antibody Pair, PBS Only. Capture antibody: 86883-2-PBS. Detection antibody: 86883-1-PBS. Standard: Ag6529. Range: 0.781-100 ng/mL.