

For Research Use Only

CCDC28A Recombinant monoclonal antibody

Catalog Number: 86883-1-RR



Basic Information

Catalog Number: 86883-1-RR	GenBank Accession Number: BC000758	Purification Method: Protein A purification
Source: Rabbit	GeneID (NCBI): 25901	CloneNo.: 251922E2
Isotype: IgG	UNIPROT ID: Q8IWP9	Recommended Dilutions: WB: 1:2000-1:10000 IHC: 1:200-1:800 IF/ICC: 1:50-1:500
Immunogen Catalog Number: AG6529	Full Name: coiled-coil domain containing 28A	
	Calculated MW: 30 kDa	
	Observed MW: 25 kDa	

Applications

Tested Applications:
WB, IHC, IF/ICC, ELISA

Species Specificity:
human, mouse, rat

Note-IHC: suggested antigen retrieval with TE buffer pH 9.0; (*) Alternatively, antigen retrieval may be performed with citrate buffer pH 6.0

Positive Controls:

WB: MCF-7 cells, Jurkat cells, A375 cells, mouse thymus tissue, mouse testis tissue, rat testis tissue

IHC: mouse testis tissue,

IF/ICC: MCF-7 cells,

Background Information

Coiled-coil domain-containing protein 28A (CCDC28A) is a translocation partner of nucleoporin 98 (NUP98) in acute leukemias, resulting in the creation of fusion genes and the expression of chimeric proteins. These fusion proteins, such as NUP98-CCDC28A, have been shown to promote myeloproliferative neoplasms (PMID: 22058212). Additionally, CCDC28A is essential for head-tail coupling stability, thereby ensuring sperm motility (PMID: 39500989).

Storage

Storage:
Store at -20°C. Stable for one year after shipment.

Storage Buffer:
PBS with 0.02% sodium azide and 50% glycerol, pH7.3

Aliquoting is unnecessary for -20°C storage

For technical support and original validation data for this product please contact:

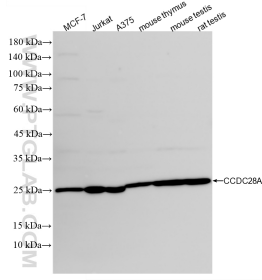
T: 4006900926

E: Proteintech-CN@ptglab.com

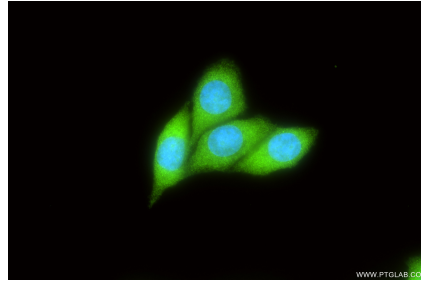
W: ptgcn.com

This product is exclusively available under Proteintech Group brand and is not available to purchase from any other manufacturer.

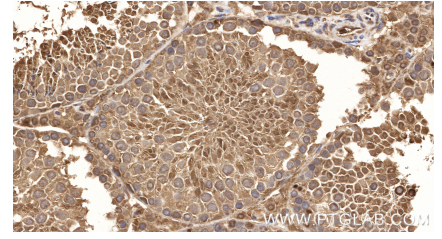
Selected Validation Data



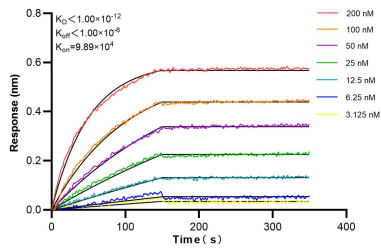
Various lysates were subjected to SDS PAGE followed by western blot with 86883-1-RR (CCDC28A antibody) at dilution of 1:5000 incubated at room temperature for 1.5 hours.



Immunofluorescent analysis of (4% PFA) fixed MCF-7 cells using CCDC28A antibody (86883-1-RR, Clone: 251922E2) at dilution of 1:200 and CoraLite® 488-Conjugated Goat Anti-Rabbit IgG(H+L) (SA00013-2).



Immunohistochemical analysis of paraffin-embedded mouse testis tissue slide using 86883-1-RR (CCDC28A antibody) at dilution of 1:400 (under 40x lens). Heat mediated antigen retrieval with Tris-EDTA buffer (pH 9.0).



Biolayer interferometry (BLI) kinetic assays of 86883-1-RR against Human CCDC28A were performed. The affinity constant is below 1 pM.