

For Research Use Only

LAMB1 Recombinant monoclonal antibody, PBS Only (Detector)

Catalog Number: 86881-2-PBS



Basic Information

Catalog Number:

86881-2-PBS

Source:

Rabbit

Isotype:

IgG

Immunogen Catalog Number:

AG19182

GenBank Accession Number:

BC113455

GeneID (NCBI):

3912

UNIPROT ID:

P07942

Full Name:

laminin, beta 1

Calculated MW:

1786 aa, 198 kDa

Purification Method:

Protein A purification

CloneNo.:

251869F10

Applications

Tested Applications:

Sandwich ELISA, Indirect ELISA

Species Specificity:

human

Background Information

Storage

Storage:

Store at -80°C.

The product is shipped with ice packs. Upon receipt, store it immediately at -80°C

Storage Buffer:

PBS only, pH7.3

For technical support and original validation data for this product please contact:

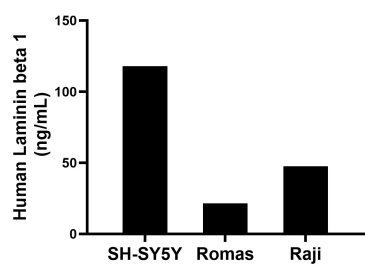
T: 4006900926

E: Proteintech-CN@ptglab.com

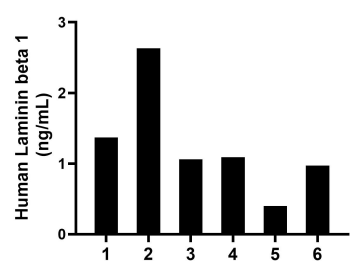
W: ptgcn.com

This product is exclusively available under Proteintech Group brand and is not available to purchase from any other manufacturer.

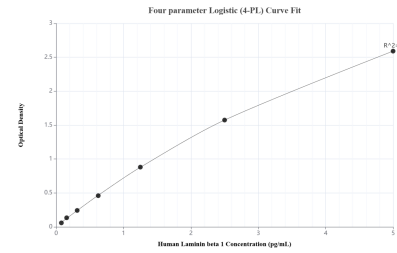
Selected Validation Data



The mean Laminin beta 1 concentration was determined to be 118.0 ng/mL in SH-SY5Y cell extract based on a 1.2 mg/mL extract load, 21.5 ng/mL in Ramos cell extract based on a 2.3 mg/mL extract load and 47.6 ng/mL in Raji cell extract based on a 1.5 mg/mL extract load.



Serum of six individual healthy human donors was measured. The Laminin beta 1 concentration of detected samples was determined to be 1.3 ng/mL with a range of 0.4-2.6 ng/mL.



Sandwich ELISA standard curve of MP02972-1, Human Laminin beta 1 Recombinant Matched Antibody Pair - PBS only. 86881-1-PBS was coated to a plate as the capture antibody and incubated with serial dilutions of standard Ag19182. 86881-2-PBS was HRP conjugated as the detection antibody. Range: 78.1-5000 pg/mL.