

Laminin beta 1 Recombinant monoclonal antibody

Catalog Number: 86881-1-RR

Basic Information

Catalog Number:

86881-1-RR

Source:

Rabbit

Isotype:

IgG

Immunogen Catalog Number:

AG19182

GenBank Accession Number:

BC113455

GeneID (NCBI):

3912

UNIPROT ID:

P07942

Full Name:

laminin, beta 1

Calculated MW:

1786 aa, 198 kDa

Observed MW:

220 kDa

Purification Method:

Protein A purification

CloneNo.:

251869B1

Recommended Dilutions:

WB: 1:5000-1:50000

Applications

Tested Applications:

WB, ELISA

Species Specificity:

human, mouse

Positive Controls:

WB : NIH/3T3 cells,

Background Information

Laminins are a family of basement membrane glycoproteins composed of three nonidentical chains, laminin alpha, beta and gamma (formerly A, B1, and B2, respectively) (PMID: 7959779). Laminins contribute to the structure of extracellular matrix and influence the behavior of associated cells, such as adhesion, differentiation, migration, phenotype stability, and resistance to anoikis (PMID: 23057746). Laminin beta 1 (LAMB1) is expressed in most tissues that produce basement membranes, and is one of the 3 chains constituting laminin-1, the first laminin isolated from Engelbreth-Holm-Swarm (EHS) tumor. Laminin beta 1 is also a subunit of laminin-2 (laminin-211 or merosin), laminin-6 (laminin-311 or K-laminin), laminin-8 (laminin-411), laminin-10 (laminin-511) and laminin-12 (laminin-213).

Storage

Storage:

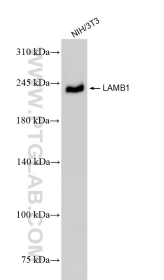
Store at -20°C. Stable for one year after shipment.

Storage Buffer:

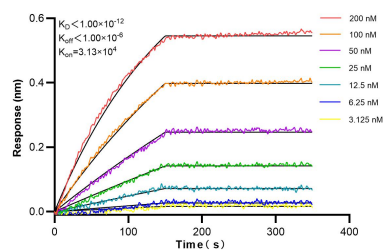
PBS with 0.02% sodium azide and 50% glycerol, pH7.3

Aliquoting is unnecessary for -20°C storage

Selected Validation Data



NIH/3T3 cells were subjected to SDS PAGE followed by western blot with 86881-1-RR (LAMB1 antibody) at dilution of 1:10000 incubated at room temperature for 1.5 hours.



Biolayer interferometry (BLI) kinetic assays of 86881-1-RR against Human Laminin beta 1 were performed. The affinity constant is below 1 pM.