

For Research Use Only

TPK1 Recombinant monoclonal antibody, PBS Only

Catalog Number:86878-1-PBS



Basic Information

Catalog Number: 86878-1-PBS	GenBank Accession Number: BC014552	Purification Method: Protein A purification
Source: Rabbit	GeneID (NCBI): 27010	CloneNo.: 251914G4
Isotype: IgG	UNIPROT ID: Q9H3S4	
Immunogen Catalog Number: AG1404	Full Name: thiamin pyrophosphokinase 1	
	Calculated MW: 28 kDa	
	Observed MW: 28 kDa	

Applications

Tested Applications:
WB, Indirect ELISA

Species Specificity:
human, mouse, rat

Background Information

TPK1(Thiamin pyrophosphokinase 1) is also named as PP20(placental protein 20) and belongs to the thiamine pyrophosphokinase family. It is a cellular enzyme involved in the regulation of thiamine metabolism and catalyzes the conversion of thiamine, a form of vitamin B1, to thiamine pyrophosphate (TDP, or TPP). There is no difference in TPK1 expression in cultured fibroblasts from normal subjects or from patients with thiamine-responsive megaloblastic anemia(PMID:11342111). It can exist as a dimer(PMID:21552434). Defects in TPK1 are the cause of thiamine metabolism dysfunction syndrome type 5, episodic encephalopathy type (THMD5).

Storage

Storage:
Store at -80°C.
The product is shipped with ice packs. Upon receipt, store it immediately at -80°C

Storage Buffer:
PBS only, pH7.3

For technical support and original validation data for this product please contact:

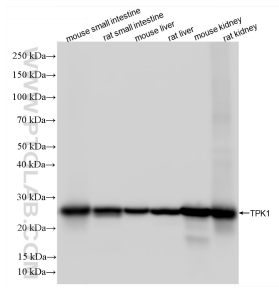
T: 4006900926

E: Proteintech-CN@ptglab.com

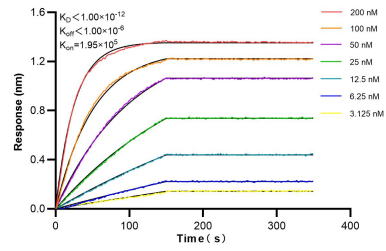
W: ptgcn.com

This product is exclusively available under Proteintech Group brand and is not available to purchase from any other manufacturer.

Selected Validation Data



Various lysates were subjected to SDS PAGE followed by western blot with 86878-1-RR (TPK1 antibody) at dilution of 1:10000 incubated at room temperature for 1.5 hours. This data was developed using the same antibody clone with 86878-1-PBS in a different storage buffer formulation.



Biolayer interferometry (BLI) kinetic assays of 86878-1-RR against Human TPK1 were performed. The affinity constant is below 1 pM.