

For Research Use Only

GLYR1 Recombinant monoclonal antibody

Catalog Number: 86877-1-RR



Basic Information

Catalog Number: 86877-1-RR	GenBank Accession Number: BC064940	Purification Method: Protein A purification
Source: Rabbit	GeneID (NCBI): 84656	CloneNo.: 251890G7
Isotype: IgG	UNIPROT ID: Q49A26	Recommended Dilutions: WB: 1:5000-1:50000 IF/ICC: 1:500-1:2000
Immunogen Catalog Number: AG6637	Full Name: cytokine-like nuclear factor n-pac	
	Calculated MW: 61 kDa	
	Observed MW: 60 kDa	

Applications

Tested Applications: WB, IF/ICC, ELISA	Positive Controls:
Species Specificity: human, rat	WB : HeLa cells, HEK-293 cells, HepG2 cells, Jurkat cells, K-562 cells, HSC-T6 cells
	IF/ICC : HeLa cells,

Background Information

GlyR1 (glyoxylate/succinate semi-Aldehyde Reductase 1) is a plant-specific NADPH- dependent reductase, which mainly locates in cytoplasm. It was originally regarded as "glyoxal/succinate semialdehyde reductase", which can reduce glyoxylate, an intermediate product of photorespiration, to glycolate, and also reduce succinate semialdehyde produced by GABA metabolism to γ -hydroxybutyric acid, thus eliminating active aldehydes and alleviating oxidative damage caused by abiotic stress. In invasive breast cancer cells, GLYR1 was detected to "flip" from the nucleus to the cell membrane (ecto-GLYR1) and became a new tumor-specific antigen. Humanized antibody and CAR-NK/CAR-T systems have been established for the membrane epitope, and will soon enter the clinical safety assessment. This means that GLYR1 itself can also be used as a "membrane target antigen" for precise tumor treatment.

Storage

Storage:
Store at -20°C. Stable for one year after shipment.

Storage Buffer:
PBS with 0.02% sodium azide and 50% glycerol, pH7.3

Aliquoting is unnecessary for -20°C storage

For technical support and original validation data for this product please contact:

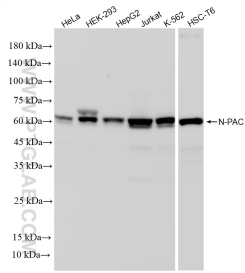
T: 4006900926

E: Proteintech-CN@ptglab.com

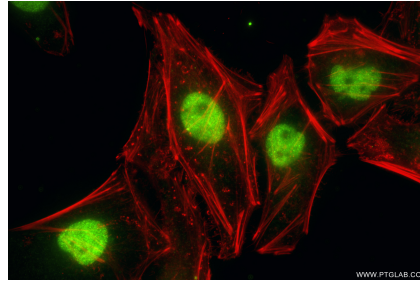
W: ptgcn.com

This product is exclusively available under Proteintech Group brand and is not available to purchase from any other manufacturer.

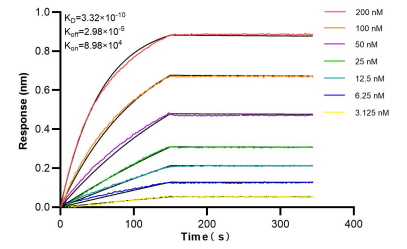
Selected Validation Data



Various lysates were subjected to SDS PAGE followed by western blot with 86877-1-RR (N-PAC antibody) at dilution of 1:20000 incubated at room temperature for 1.5 hours.



Immunofluorescent analysis of (4% PFA) fixed HeLa cells using N-PAC antibody (86877-1-RR, Clone: 251890G7) at dilution of 1:1000 and CoraLite® 488-Conjugated Goat Anti-Rabbit IgG(H+L) (SA00013-2), CL594-Phalloidin (red).



Biolayer interferometry (BLI) kinetic assays of 86877-1-RR against Human GLYR1 were performed. The affinity constant is 0.332 nM.