

For Research Use Only

SOLO/SESTD1 Recombinant monoclonal antibody

Catalog Number:86875-2-RR



Basic Information

Catalog Number: 86875-2-RR	GenBank Accession Number: BC047578	Purification Method: Protein A purification
Source: Rabbit	GeneID (NCBI): 91404	CloneNo.: 251894E9
Isotype: IgG	UNIPROT ID: Q86VW0	Recommended Dilutions: WB: 1:5000-1:50000 IF/ICC: 1:50-1:500
Immunogen Catalog Number: AG21016	Full Name: SEC14 and spectrin domains 1	
	Calculated MW: 696 aa, 79 kDa	
	Observed MW: 79 kDa	

Applications

Tested Applications: WB, IF/ICC, ELISA	Positive Controls:
Species Specificity: human, mouse, rat	WB : HepG2 cells, Jurkat cells, mouse brain tissue, rat brain tissue, L02 cells, MCF-7 cells, MDCK cells
	IF/ICC : Jurkat cells, HepG2 cells

Background Information

SEC14 domain and spectrin repeat-containing protein 1 (SESTD1) is also named Huntingtin-interacting protein-like protein and SOLO. SESTD1, a previously uncharacterized lipid-binding protein strongly expressed in aorta, was found to interact with both TRPC proteins and modulate receptor-activated TRPC5 currents in a recombinant cell line (PMID: 20164195). SESTD1 is proposed to be involved in phospholipid regulation of transient receptor potential channels TRPC4 and TRPC5 (PMID: 26503763). SESTD1 expression is associated with high abundance of immune infiltration, including T helper cells, Th2 cells, and Macrophages in HCC (PMID: 41016345).

Storage

Storage:
Store at -20°C. Stable for one year after shipment.
Storage Buffer:
PBS with 0.02% sodium azide and 50% glycerol, pH7.3
Aliquoting is unnecessary for -20°C storage

For technical support and original validation data for this product please contact:

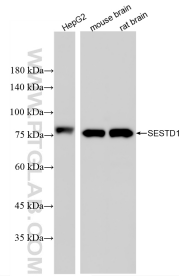
T: 4006900926

E: Proteintech-CN@ptglab.com

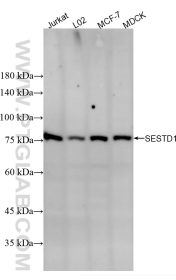
W: ptgcn.com

This product is exclusively available under Proteintech Group brand and is not available to purchase from any other manufacturer.

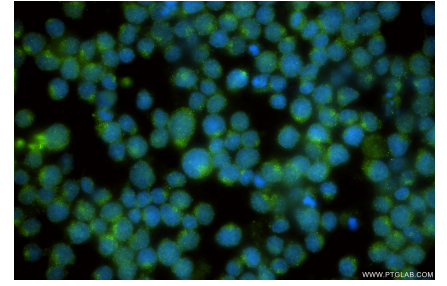
Selected Validation Data



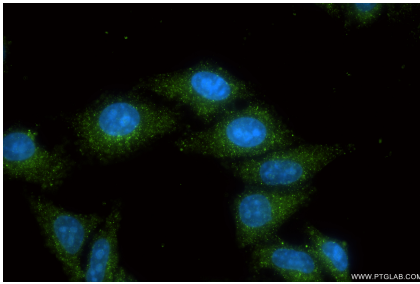
Various lysates were subjected to SDS PAGE followed by western blot with 86875-2-RR (SESTD1 antibody) at dilution of 1:10000 incubated at room temperature for 1.5 hours.



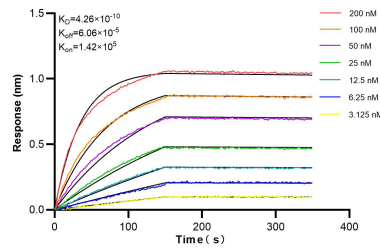
Various lysates were subjected to SDS PAGE followed by western blot with 86875-2-RR (SESTD1 antibody) at dilution of 1:10000 incubated at room temperature for 1.5 hours.



Immunofluorescent analysis of (4% PFA) fixed Jurkat cells using SESTD1 antibody (86875-2-RR, Clone: 251894E9) at dilution of 1:200 and CoraLite®488-Conjugated Goat Anti-Rabbit IgG(H+L) (SA00013-2).



Immunofluorescent analysis of (-20°C Ethanol) fixed HepG2 cells using SESTD1 antibody (86875-2-RR, Clone: 251894E9) at dilution of 1:200 and CoraLite®488-Conjugated Goat Anti-Rabbit IgG(H+L) (SA00013-2).



Biolayer interferometry (BLI) kinetic assays of 86875-2-RR against Human SOLO/SESTD1 were performed. The affinity constant is 0.426 nM.