

For Research Use Only

SESTD1 Recombinant monoclonal antibody, PBS Only (Detector)

Catalog Number:86875-1-PBS



Basic Information

Catalog Number: 86875-1-PBS	GenBank Accession Number: BC047578	Purification Method: Protein A purification
Source: Rabbit	GeneID (NCBI): 91404	CloneNo.: 251894D5
Isotype: IgG	UNIPROT ID: Q86VW0	
Immunogen Catalog Number: AG21016	Full Name: SEC14 and spectrin domains 1	
	Calculated MW: 696 aa, 79 kDa	

Applications

Tested Applications:
Cytometric bead array, Indirect ELISA

Species Specificity:
human

Background Information

Storage

Storage:
Store at -80°C.
The product is shipped with ice packs. Upon receipt, store it immediately at -80°C

Storage Buffer:
PBS only, pH7.3

For technical support and original validation data for this product please contact:

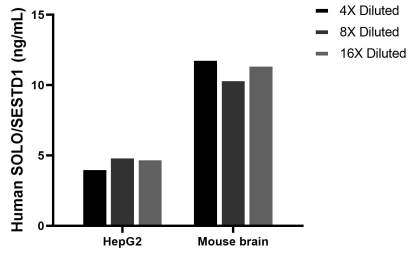
T: 4006900926

E: Proteintech-CN@ptglab.com

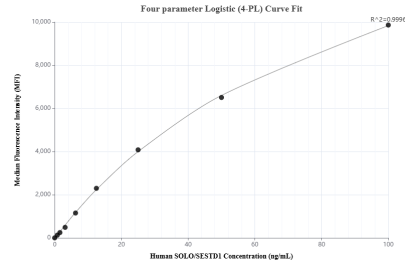
W: ptgcn.com

This product is exclusively available under Proteintech Group brand and is not available to purchase from any other manufacturer.

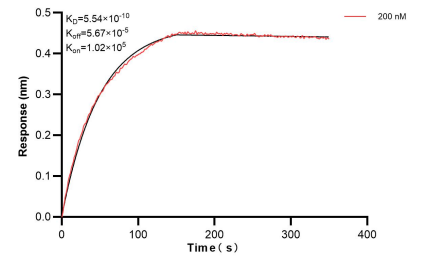
Selected Validation Data



The mean SOLO/SESTD1 concentration was determined to be 4.6 ng/mL in HepG2 cell extract based on a 1.2 mg/mL extract load, 11.3 ng/mL in Mouse brain tissue extract based on a 3.2 mg/mL extract load.



Cytometric bead array standard curve of MP02736-1, SOLO/SESTD1 Recombinant Matched Antibody Pair, PBS Only. Capture antibody: 86875-2-PBS. Detection antibody: 86875-1-PBS. Standard: Ag21016. Range: 0.781-100 ng/mL.



Bi-layer interferometry (BLI) kinetic assay of 86875-1-PBS against Human SESTD1 was performed. The affinity constant is 0.554 nM.