

For Research Use Only

CD158Z/KIR3DL3 Recombinant monoclonal antibody, PBS Only (Detector)

Catalog Number: 86872-1-PBS



Basic Information

Catalog Number: 86872-1-PBS	GenBank Accession Number: /	Purification Method: Protein A purification
Source: Rabbit	GeneID (NCBI): 115653	CloneNo.: 25025483
Isotype: IgG	UNIPROT ID: Q8N743	
Immunogen Catalog Number: EG4358	Full Name: killer cell immunoglobulin-like receptor, three domains, long cytoplasmic tail, 3	
	Calculated MW: 45 kDa	

Applications

Tested Applications:
Cytometric bead array, Indirect ELISA

Species Specificity:
human

Background Information

Storage

Storage:
Store at -80°C.
The product is shipped with ice packs. Upon receipt, store it immediately at -80°C

Storage Buffer:
PBS only, pH7.3

For technical support and original validation data for this product please contact:

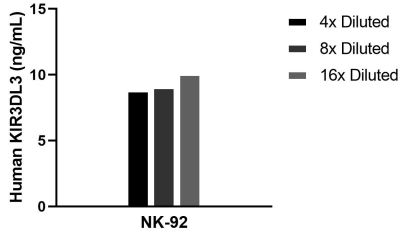
T: 4006900926

E: Proteintech-CN@ptglab.com

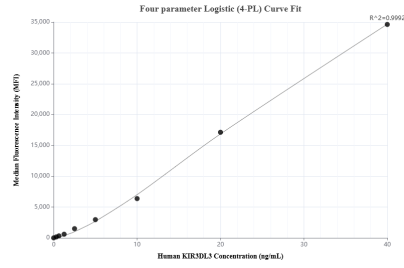
W: ptgcn.com

This product is exclusively available under Proteintech Group brand and is not available to purchase from any other manufacturer.

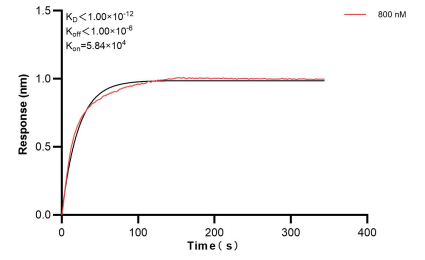
Selected Validation Data



The mean KIR3DL3 concentration was determined to be 9.3 ng/mL in NK-92 cell extract based on a 1.2 mg/mL extract load.



Cytometric bead array standard curve of MP02734-1, KIR3DL3 Recombinant Matched Antibody Pair, PBS Only. Capture antibody: 86872-2-PBS. Detection antibody: 86872-1-PBS. Standard: Eg4358. Range: 0.312-40 ng/mL.



Bi-layer interferometry (BLI) kinetic assay of 86872-1-PBS against Human CD158Z/KIR3DL3 was performed. The affinity constant is below 1 pM.