

For Research Use Only

DOCK10 Recombinant monoclonal antibody

Catalog Number: 86866-1-RR



Basic Information

Catalog Number:

86866-1-RR

Source:

Rabbit

Isotype:

IgG

Immunogen Catalog Number:

AG10486

GenBank Accession Number:

BC015018

GeneID (NCBI):

55619

UNIPROT ID:

Q96BY6

Full Name:

dedicator of cytokinesis 10

Calculated MW:

542 aa, 62 kDa

Observed MW:

250 kDa

Purification Method:

Protein A purification

CloneNo.:

251795G8

Recommended Dilutions:

WB: 1:1000-1:4000

IP: 0.5-4.0 ug for 1.0-3.0 mg of total protein lysate

Applications

Tested Applications:

WB, IP, ELISA

Species Specificity:

human

Positive Controls:

WB : HeLa cells, Jurkat cells

IP : HeLa cells,

Background Information

DOCK10 (Dedicator of Cytokinesis 10) is a protein-coding gene that belongs to the DOCK family of guanine nucleotide exchange factors (GEFs). It is involved in regulating the activity of Rho GTPases, particularly Rac1 and Cdc42, which play crucial roles in various cellular processes.

Storage

Storage:

Store at -20°C. Stable for one year after shipment.

Storage Buffer:

PBS with 0.02% sodium azide and 50% glycerol, pH7.3

Aliquoting is unnecessary for -20°C storage

For technical support and original validation data for this product please contact:

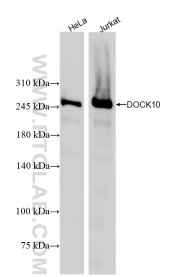
T: 4006900926

E: Proteintech-CN@ptglab.com

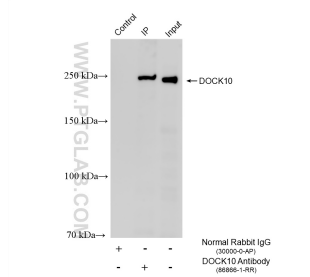
W: ptgcn.com

This product is exclusively available under Proteintech Group brand and is not available to purchase from any other manufacturer.

Selected Validation Data



Various lysates were subjected to SDS PAGE followed by western blot with 86866-1-RR (DOCK10 antibody) at dilution of 1:2000 incubated at room temperature for 1.5 hours.



IP result of anti-DOCK10 (IP:86866-1-RR, 4ug; Detection:86866-1-RR 1:1000) with HeLa cells lysate 920 ug.