

For Research Use Only

Mono-Methyl-Histone H3 (Lys23) Recombinant monoclonal antibody, PBS Only



Catalog Number: 86861-1-PBS

Basic Information

Catalog Number:

86861-1-PBS

Source:

Rabbit

Isotype:

IgG

GenBank Accession Number:

BC066245

GeneID (NCBI):

8350

UNIPROT ID:

P68431

Full Name:

histone cluster 1, H3a

Observed MW:

15 kDa

Purification Method:

Protein A purification

CloneNo.:

250368B2

Applications

Tested Applications:

WB, IF/ICC, Dot blot, Indirect ELISA, ChIP-qPCR

Species Specificity:

human, mouse, rat

Background Information

Storage

Storage:

Store at -80°C.

The product is shipped with ice packs. Upon receipt, store it immediately at -80°C

Storage Buffer:

PBS only, pH7.3

For technical support and original validation data for this product please contact:

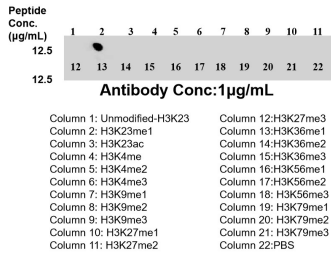
T: 4006900926

E: Proteintech-CN@ptglab.com

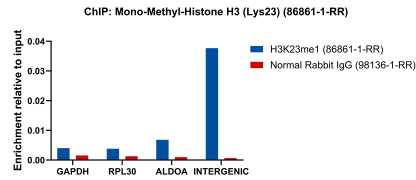
W: ptgcn.com

This product is exclusively available under Proteintech Group brand and is not available to purchase from any other manufacturer.

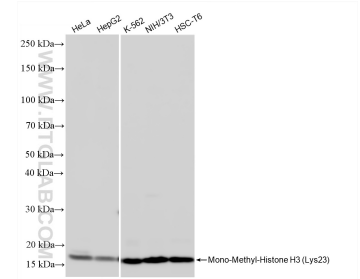
Selected Validation Data



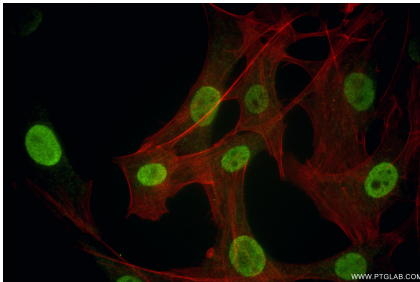
Dot blot analysis was used to confirm the specificity of 86861-1-RR Mono-Methyl-Histone H3 (Lys23) antibody. peptides were spotted onto NC and probed with antibody at 1 µg/ml. The amount of peptide (µ g/ml) spotted is indicated next to each row. This data was developed using the same antibody clone with 86861-1-PBS in a different storage buffer formulation.



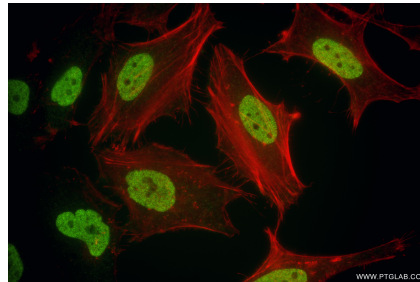
Chromatin was prepared from HeLa cells. Cells were fixed with formaldehyde for 10 minutes. The ChIP was performed with 15 µg of cross-linked chromatin, 5 µg of Mono-Methyl-Histone H3 (Lys23) (86861-1-RR) or 5 µg of Normal Rabbit IgG (98136-1-RR), and 20 µl of Protein A Magarose Beads. The immunoprecipitated DNA was quantified by real-time PCR. This data was developed using the same antibody clone with 86861-1-PBS in a different storage buffer formulation.



Various lysates were subjected to SDS PAGE followed by western blot with 86861-1-RR (Mono-Methyl-Histone H3 (Lys23) antibody) at dilution of 1:5000 incubated at room temperature for 1.5 hours. This data was developed using the same antibody clone with 86861-1-PBS in a different storage buffer formulation.



Immunofluorescent analysis of (4% PFA) fixed NIH/3T3 cells using Mono-Methyl-Histone H3 (Lys23) antibody (86861-1-RR, Clone: 250368B2) at dilution of 1:1000 and CoraLite®488-Conjugated Goat Anti-Rabbit IgG(H+L) (SA00013-2), CL594-Phalloidin (red). This data was developed using the same antibody clone with 86861-1-PBS in a different storage buffer formulation.



Immunofluorescent analysis of (4% PFA) fixed HeLa cells using Mono-Methyl-Histone H3 (Lys23) antibody (86861-1-RR, Clone: 250368B2) at dilution of 1:1000 and CoraLite®488-Conjugated Goat Anti-Rabbit IgG(H+L) (SA00013-2), CL594-Phalloidin (red). This data was developed using the same antibody clone with 86861-1-PBS in a different storage buffer formulation.