

For Research Use Only

CAMK2B Recombinant monoclonal antibody, PBS Only (Capture)

Catalog Number: 86858-2-PBS



Basic Information

| | | |
|--|--|---|
| Catalog Number: 86858-2-PBS | GenBank Accession Number: BC019070 | Purification Method: Protein A purification |
| Source: Rabbit | GeneID (NCBI): 816 | CloneNo.: 251925E3 |
| Isotype: IgG | UNIPROT ID: Q13554 | |
| Immunogen Catalog Number: AG2119 | Full Name: calcium/calmodulin-dependent protein kinase II beta | |
| | Calculated MW: 503 aa, 56 kDa | |

Applications

Tested Applications:
Sandwich ELISA, Indirect ELISA

Species Specificity:
human

Background Information

Storage

Storage:
Store at -80°C.
The product is shipped with ice packs. Upon receipt, store it immediately at -80°C

Storage Buffer:
PBS only, pH7.3

For technical support and original validation data for this product please contact:

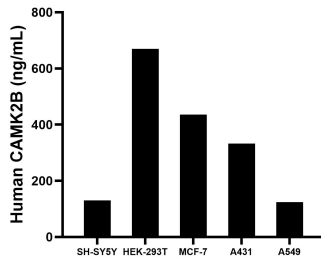
T: 4006900926

E: Proteintech-CN@ptglab.com

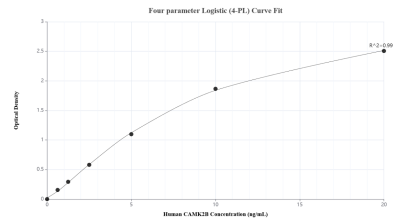
W: ptgcn.com

This product is exclusively available under Proteintech Group brand and is not available to purchase from any other manufacturer.

Selected Validation Data



The mean CAMK2B concentration was determined to be 130.09 ng/mL in SH-SY5Y cell extract based on a 1.20 mg/mL extract load, 669.36 ng/mL in HEK-293T cell extract based on a 1.20 mg/mL extract load, 436.22 ng/mL in MCF-7 cell extract based on a 1.20 mg/mL extract load, 332.36 ng/mL in A431 cell extract based on a 1.20 mg/mL extract load and 124.24 ng/mL in A549 cell extract based on a 1.20 mg/mL extract load.



Sandwich ELISA standard curve of MP02919-1, Human CAMK2B Recombinant Matched Antibody Pair - PBS only. 86858-2-PBS was coated to a plate as the capture antibody and incubated with serial dilutions of standard Ag2119. 86858-1-PBS was HRP conjugated as the detection antibody. Range: 0.625-20 ng/mL.