

For Research Use Only

CAMK2B Recombinant monoclonal antibody

Catalog Number: 86858-1-RR



Basic Information

Catalog Number: 86858-1-RR	GenBank Accession Number: BC019070	Purification Method: Protein A purification
Source: Rabbit	GeneID (NCBI): 816	CloneNo.: 251925D4
Isotype: IgG	UNIPROT ID: Q13554	Recommended Dilutions: WB: 1:5000-1:50000
Immunogen Catalog Number: AG2119	Full Name: calcium/calmodulin-dependent protein kinase II beta	
	Calculated MW: 503 aa, 56 kDa	
	Observed MW: 50-70 kDa	

Applications

Tested Applications: WB, ELISA	Positive Controls: WB: U-251 cells, SH-SY5Y cells, Neuro-2a cells, C6 cells, rat brain tissue, mouse brain tissue, fetal human brain tissue
Species Specificity: human, mouse, rat	

Background Information

CAMK2B (Calcium/calmodulin-dependent protein kinase type II subunit beta), also named CAM2, CAMK2, and CAMKB, belongs to the protein kinase superfamily, CAMK Ser/Thr protein kinase family, and CaMK subfamily. It is a prominent kinase in the central nervous system that may function in long-term potentiation and neurotransmitter release. CAMK2B is a member of the NMDAR signaling complex in excitatory synapses, it may regulate NMDAR-dependent potentiation of the AMPAR and synaptic plasticity. It plays a distinct role in the induction of energy in T lymphocytes, by differential regulation of IL10 and IL2 gene transcription suggesting MEF2A as a molecular target that can integrate different calcium signals (PMID:22578382). This protein has 8 isoforms produced by alternative splicing with a molecular weight between 50 kDa and 73 kDa. This antibody may have cross-reaction with CAMK2A/D/G due to the high homology.

Storage

Storage:
Store at -20°C. Stable for one year after shipment.
Storage Buffer:
PBS with 0.02% sodium azide and 50% glycerol, pH7.3
Aliquoting is unnecessary for -20°C storage

For technical support and original validation data for this product please contact:

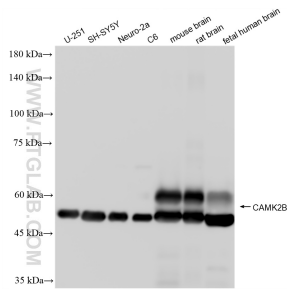
T: 4006900926

E: Proteintech-CN@ptglab.com

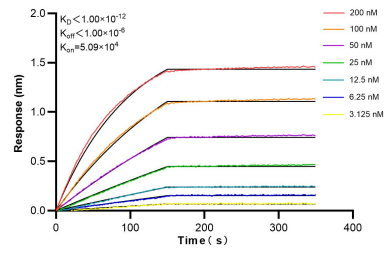
W: ptgcn.com

This product is exclusively available under Proteintech Group brand and is not available to purchase from any other manufacturer.

Selected Validation Data



Various lysates were subjected to SDS PAGE followed by western blot with 86858-1-RR (CAMK2B antibody) at dilution of 1:10000 incubated at room temperature for 1.5 hours.



Biolayer interferometry (BLI) kinetic assays of 86858-1-RR against Human CAMK2B were performed. The affinity constant is below 1 pM.