

For Research Use Only

POLA2 Recombinant monoclonal antibody, PBS Only (Capture)

Catalog Number: 86856-5-PBS



Basic Information

Catalog Number:

86856-5-PBS

Source:

Rabbit

Isotype:

IgG

Immunogen Catalog Number:

AG0271

GenBank Accession Number:

BC001347

GeneID (NCBI):

23649

UNIPROT ID:

Q14181

Full Name:

polymerase (DNA directed), alpha 2
(70kD subunit)

Calculated MW:

70 kDa

Purification Method:

Protein A purification

CloneNo.:

251924C8

Applications

Tested Applications:

Sandwich ELISA, Indirect ELISA

Species Specificity:

human

Background Information

Storage

Storage:

Store at -80°C.

The product is shipped with ice packs. Upon receipt, store it immediately at -80°C

Storage Buffer:

PBS only, pH7.3

For technical support and original validation data for this product please contact:

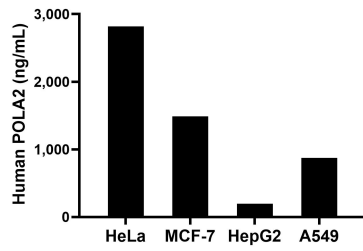
T: 4006900926

E: Proteintech-CN@ptglab.com

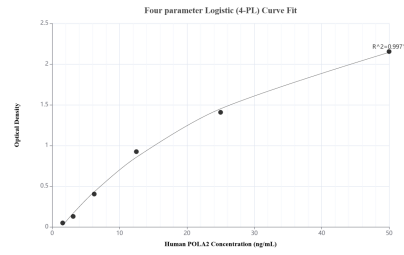
W: ptgcn.com

This product is exclusively available under Proteintech Group brand and is not available to purchase from any other manufacturer.

Selected Validation Data



The mean POLA2 concentration was determined to be 2,818.00 ng/mL in HeLa cell extract based on a 1.20 mg/mL extract load, 1,487.00 ng/mL in MCF-7 cell extract based on a 1.20 mg/mL extract load, 198.00 ng/mL in HepG2 cell extract based on a 1.20 mg/mL extract load and 873.00 ng/mL in A549 cell extract based on a 1.20 mg/mL extract load.



Sandwich ELISA standard curve of MP02735-2, Human POLA2 Recombinant Matched Antibody Pair - PBS only. 86856-5-PBS was coated to a plate as the capture antibody and incubated with serial dilutions of standard Ag0271. 86856-4-PBS was HRP conjugated as the detection antibody. Range: 1.56-50 ng/mL.