

For Research Use Only

# POLA2 Recombinant monoclonal antibody

Catalog Number: 86856-3-RR



## Basic Information

Catalog Number:

86856-3-RR

Source:

Rabbit

Isotype:

IgG

Immunogen Catalog Number:

AG0271

GenBank Accession Number:

BC001347

GeneID (NCBI):

23649

UNIPROT ID:

Q14181

Full Name:

polymerase (DNA directed), alpha 2  
(70kD subunit)

Calculated MW:

70 kDa

Observed MW:

68-70 kDa

Purification Method:

Protein A purification

CloneNo.:

251924F2

Recommended Dilutions:

WB: 1:5000-1:50000

## Applications

Tested Applications:

WB, ELISA

Species Specificity:

human

Positive Controls:

WB : HepG2 cells, HeLa cells, COLO 320 cells, MCF-7 cells, NIH/3T3 cells, RAW 264.7 cells, PC-12 cells

## Background Information

### Storage

Storage:

Store at -20°C. Stable for one year after shipment.

Storage Buffer:

PBS with 0.02% sodium azide and 50% glycerol, pH7.3

Aliquoting is unnecessary for -20°C storage

For technical support and original validation data for this product please contact:

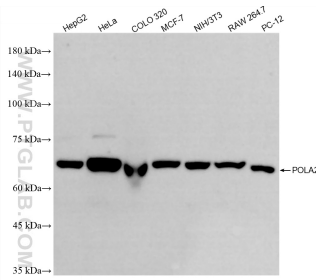
T: 4006900926

E: [Proteintech-CN@ptglab.com](mailto:Proteintech-CN@ptglab.com)

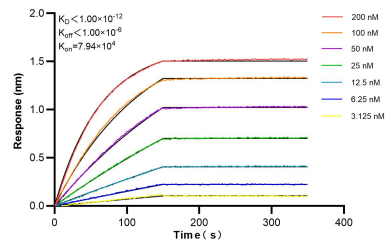
W: [ptgcn.com](http://ptgcn.com)

This product is exclusively available under Proteintech Group brand and is not available to purchase from any other manufacturer.

## Selected Validation Data



Various lysates were subjected to SDS PAGE followed by western blot with 86856-3-RR (POLA2 antibody) at dilution of 1:10000 incubated at room temperature for 1.5 hours.



Biolayer interferometry (BLI) kinetic assays of 86856-3-RR against Human POLA2 were performed. The affinity constant is below 1 pM.