

For Research Use Only

POLA2 Recombinant monoclonal antibody, PBS Only (Detector)

Catalog Number: 86856-2-PBS



Basic Information

Catalog Number: 86856-2-PBS	GenBank Accession Number: BC001347	Purification Method: Protein A purification
Source: Rabbit	GeneID (NCBI): 23649	CloneNo.: 251924H1
Isotype: IgG	UNIPROT ID: Q14181	
Immunogen Catalog Number: AG0271	Full Name: polymerase (DNA directed), alpha 2 (70kD subunit)	
	Calculated MW: 70 kDa	

Applications

Tested Applications:
Cytometric bead array, Indirect ELISA

Species Specificity:
human

Background Information

Storage

Storage:
Store at -80°C.
The product is shipped with ice packs. Upon receipt, store it immediately at -80°C

Storage Buffer:
PBS only, pH7.3

For technical support and original validation data for this product please contact:

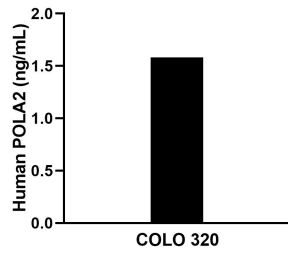
T: 4006900926

E: Proteintech-CN@ptglab.com

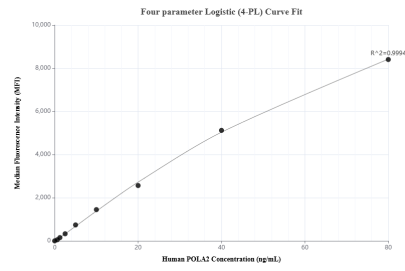
W: ptgcn.com

This product is exclusively available under Proteintech Group brand and is not available to purchase from any other manufacturer.

Selected Validation Data



The mean POLA2 concentration was determined to be 1.6 ng/mL in COLO 320 cell extract based on a 1.5 mg/mL extract load.



Cytometric bead array standard curve of MP02735-1, POLA2 Recombinant Matched Antibody Pair, PBS Only. Capture antibody: 86856-1-PBS. Detection antibody: 86856-2-PBS. Standard: Ag0271. Range: 0.625-80 ng/mL.