

For Research Use Only

POLA2 Recombinant monoclonal antibody

Catalog Number: 86856-1-RR



Basic Information

Catalog Number:

86856-1-RR

Source:

Rabbit

Isotype:

IgG

Immunogen Catalog Number:

AG0271

GenBank Accession Number:

BC001347

GeneID (NCBI):

23649

UNIPROT ID:

Q14181

Full Name:

polymerase (DNA directed), alpha 2
(70kD subunit)

Calculated MW:

70 kDa

Observed MW:

68-70 kDa

Purification Method:

Protein A purification

CloneNo.:

251924A2

Recommended Dilutions:

WB: 1:5000-1:50000

Applications

Tested Applications:

WB, ELISA

Species Specificity:

human, mouse, rat

Positive Controls:

WB : HepG2 cells, HeLa cells, COLO 320 cells, MCF-7 cells, NIH/3T3 cells, RAW 264.7 cells, PC-12 cells

Background Information

Storage

Storage:

Store at -20°C. Stable for one year after shipment.

Storage Buffer:

PBS with 0.02% sodium azide and 50% glycerol, pH7.3

Aliquoting is unnecessary for -20°C storage

For technical support and original validation data for this product please contact:

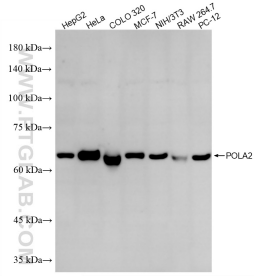
T: 4006900926

E: Proteintech-CN@ptglab.com

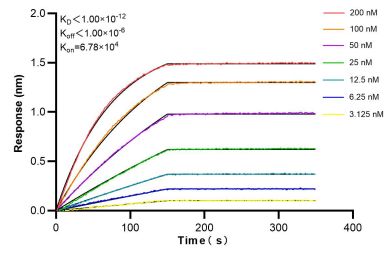
W: ptgcn.com

This product is exclusively available under Proteintech Group brand and is not available to purchase from any other manufacturer.

Selected Validation Data



Various lysates were subjected to SDS PAGE followed by western blot with 86856-1-RR (POLA2 antibody) at dilution of 1:10000 incubated at room temperature for 1.5 hours.



Biolayer interferometry (BLI) kinetic assays of 86856-1-RR against Human POLA2 were performed. The affinity constant is below 1 pM.