

For Research Use Only

# POLA2 Recombinant monoclonal antibody, PBS Only (Capture)

Catalog Number: 86856-1-PBS



## Basic Information

<b>Catalog Number:</b> 86856-1-PBS	<b>GenBank Accession Number:</b> BC001347	<b>Purification Method:</b> Protein A purification
<b>Source:</b> Rabbit	<b>GeneID (NCBI):</b> 23649	<b>CloneNo.:</b> 251924A2
<b>Isotype:</b> IgG	<b>UNIPROT ID:</b> Q14181	
<b>Immunogen Catalog Number:</b> AG0271	<b>Full Name:</b> polymerase (DNA directed), alpha 2 (70kD subunit)	
	<b>Calculated MW:</b> 70 kDa	
	<b>Observed MW:</b> 68-70 kDa	

## Applications

**Tested Applications:**  
WB, Cytometric bead array, Indirect ELISA

**Species Specificity:**  
human, mouse, rat

## Background Information

### Storage

**Storage:**  
Store at -80°C.  
**The product is shipped with ice packs. Upon receipt, store it immediately at -80°C**

**Storage Buffer:**  
PBS only, pH7.3

For technical support and original validation data for this product please contact:

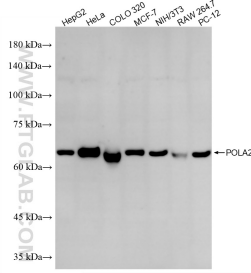
T: 4006900926

E: [Proteintech-CN@ptglab.com](mailto:Proteintech-CN@ptglab.com)

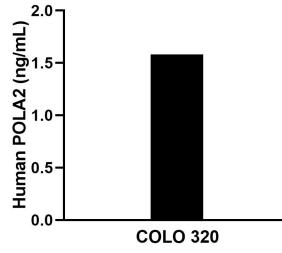
W: [ptgcn.com](http://ptgcn.com)

**This product is exclusively available under Proteintech Group brand and is not available to purchase from any other manufacturer.**

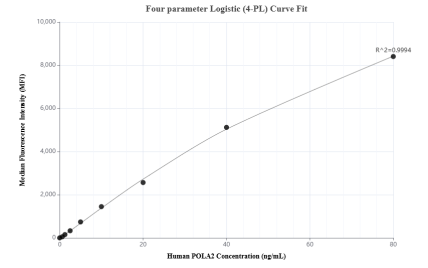
## Selected Validation Data



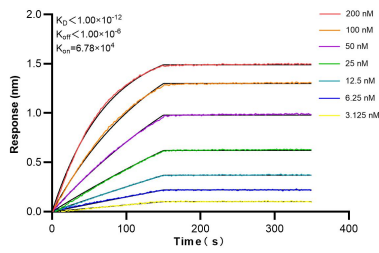
Various lysates were subjected to SDS PAGE followed by western blot with 86856-1-RR (POLA2 antibody) at dilution of 1:10000 incubated at room temperature for 1.5 hours. This data was developed using the same antibody clone with 86856-1-PBS in a different storage buffer formulation.



The mean POLA2 concentration was determined to be 1.6 ng/mL in COLO 320 cell extract based on a 1.5 mg/mL extract load.



Cytometric bead array standard curve of MP02735-1, POLA2 Recombinant Matched Antibody Pair, PBS Only. Capture antibody: 86856-1-PBS. Detection antibody: 86856-2-PBS. Standard: Ag0271. Range: 0.625-80 ng/mL.



Biolayer interferometry (BLI) kinetic assays of 86856-1-RR against Human POLA2 were performed. The affinity constant is below 1 pM.