

For Research Use Only

REEP5 Recombinant monoclonal antibody, PBS Only (Capture)

Catalog Number: 86849-3-PBS



Basic Information

Catalog Number:

86849-3-PBS

Source:

Rabbit

Isotype:

IgG

Immunogen Catalog Number:

AG6229

GenBank Accession Number:

BC065926

GeneID (NCBI):

7905

UNIPROT ID:

Q00765

Full Name:

receptor accessory protein 5

Calculated MW:

21 kDa

Purification Method:

Protein A purification

CloneNo.:

251882E1

Applications

Tested Applications:

Cytometric bead array, Indirect ELISA

Species Specificity:

human

Background Information

Storage

Storage:

Store at -80°C.

The product is shipped with ice packs. Upon receipt, store it immediately at -80°C

Storage Buffer:

PBS only, pH7.3

For technical support and original validation data for this product please contact:

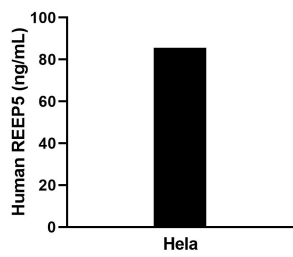
T: 4006900926

E: Proteintech-CN@ptglab.com

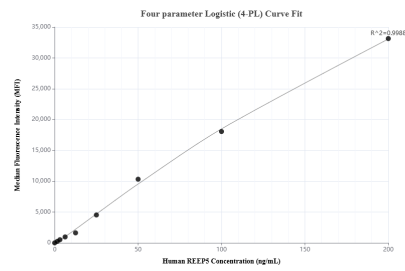
W: ptgcn.com

This product is exclusively available under Proteintech Group brand and is not available to purchase from any other manufacturer.

Selected Validation Data



The mean REEP5 concentration was determined to be 86.6 ng/mL in HeLa cell extract based on a 1.2 mg/mL extract load.



Cytometric bead array standard curve of MP02732-1, REEP5 Recombinant Matched Antibody Pair, PBS Only. Capture antibody: 86849-3-PBS. Detection antibody: 86849-2-PBS. Standard: Ag6229. Range: 1.562-200 ng/mL.