

For Research Use Only

SPIN1 Recombinant monoclonal antibody, PBS Only (Detector)

Catalog Number:86848-4-PBS



Basic Information

Catalog Number: 86848-4-PBS	GenBank Accession Number: BC013571	Purification Method: Protein A purification
Source: Rabbit	GeneID (NCBI): 10927	CloneNo.: 251836G5
Isotype: IgG	UNIPROT ID: Q9Y657	
Immunogen Catalog Number: AG2750	Full Name: spindlin 1	
	Calculated MW: 262 aa, 30 kDa	

Applications

Tested Applications:
Sandwich ELISA, Indirect ELISA

Species Specificity:
human

Background Information

Storage

Storage:
Store at -80°C.
The product is shipped with ice packs. Upon receipt, store it immediately at -80°C

Storage Buffer:
PBS only, pH7.3

For technical support and original validation data for this product please contact:

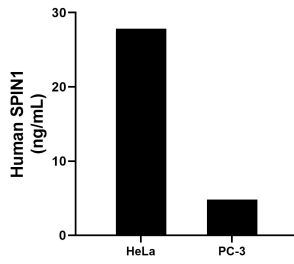
T: 4006900926

E: Proteintech-CN@ptglab.com

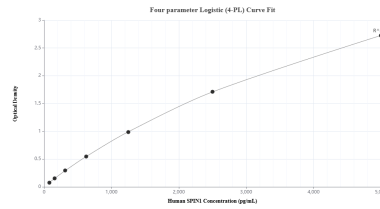
W: ptgcn.com

This product is exclusively available under Proteintech Group brand and is not available to purchase from any other manufacturer.

Selected Validation Data



The mean SPIN1 concentration was determined to be 27.85 ng/mL in HeLa cell extract based on a 1.2 mg/mL extract load and 4.80 ng/mL in PC-3 cell extract based on a 1.2 mg/mL extract load.



Sandwich ELISA standard curve of MP02730-2, Human SPIN1 Recombinant Matched Antibody Pair - PBS only. 86848-3-PBS was coated to a plate as the capture antibody and incubated with serial dilutions of standard Ag2750. 86848-4-PBS was HRP conjugated as the detection antibody. Range: 78.1-5000 pg/mL