

For Research Use Only

MMP10 Recombinant monoclonal antibody, PBS Only (Detector)

Catalog Number:86845-3-PBS



Basic Information

Catalog Number:

86845-3-PBS

Source:

Rabbit

Isotype:

IgG

Immunogen Catalog Number:

EG3038

GenBank Accession Number:

NM_002425.3

GeneID (NCBI):

4319

UNIPROT ID:

P09238

Full Name:

matrix metalloproteinase 10
(stromelysin 2)

Calculated MW:

54 kDa

Purification Method:

Protein A purification

CloneNo.:

251067G1

Applications

Tested Applications:

Sandwich ELISA, Indirect ELISA

Species Specificity:

human

Background Information

Storage

Storage:

Store at -80°C.

The product is shipped with ice packs. Upon receipt, store it immediately at -80°C

Storage Buffer:

PBS only, pH7.3

For technical support and original validation data for this product please contact:

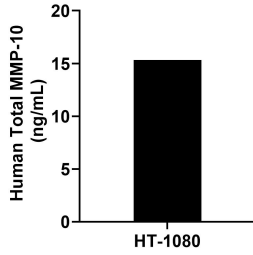
T: 4006900926

E: Proteintech-CN@ptglab.com

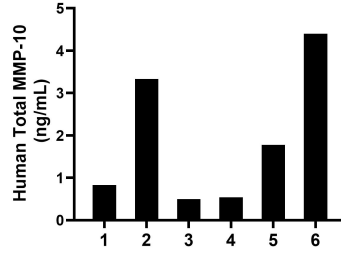
W: ptgcn.com

This product is exclusively available under Proteintech Group brand and is not available to purchase from any other manufacturer.

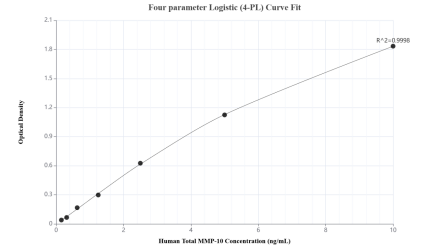
Selected Validation Data



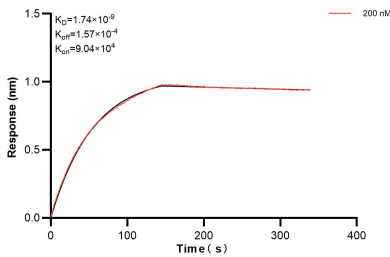
HT-1080 were cultured in DMEM supplemented with 10% fetal bovine serum, 2.5 mM L-glutamine, 100 U/mL penicillin, and 100 μ g/mL streptomycin sulfate. An aliquot of the cell culture supernate was removed, assayed for human Total MMP-10, and measured 15.32 ng/mL.



Plasma of six individual healthy human donors was measured. The Total MMP-10 concentration of detected samples was determined to be 1.90 ng/mL with a range of 0.50-4.40 ng/mL.



Sandwich ELISA standard curve of MP02702-2, Human Total MMP-10 Recombinant Matched Antibody Pair - PBS only. 86845-2-PBS was coated to a plate as the capture antibody and incubated with serial dilutions of standard Eg3038. 86845-3-PBS was HRP conjugated as the detection antibody. Range: 0.156-10 ng/mL.



Biolayer interferometry (BLI) kinetic assay of 86845-3-PBS against Human MMP10 was performed. The affinity constant is 1.74 nM.