

For Research Use Only

MMP10 Recombinant monoclonal antibody, PBS Only (Capture)

Catalog Number: 86845-2-PBS



Basic Information

Catalog Number: 86845-2-PBS	GenBank Accession Number: NM_002425.3	Purification Method: Protein A purification
Source: Rabbit	GeneID (NCBI): 4319	CloneNo.: 251067G2
Isotype: IgG	UNIPROT ID: P09238	
Immunogen Catalog Number: EG3038	Full Name: matrix metalloproteinase 10 (stromelysin 2)	
	Calculated MW: 54 kDa	

Applications

Tested Applications:
Cytometric bead array, Sandwich ELISA, Indirect ELISA

Species Specificity:
human

Background Information

Storage

Storage:
Store at -80°C.
The product is shipped with ice packs. Upon receipt, store it immediately at -80°C

Storage Buffer:
PBS only, pH7.3

For technical support and original validation data for this product please contact:

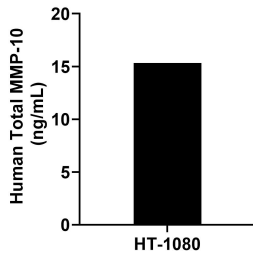
T: 4006900926

E: Proteintech-CN@ptglab.com

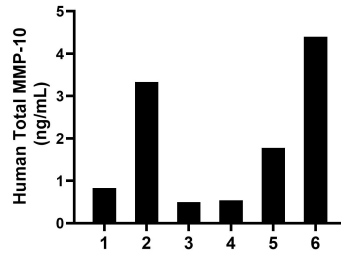
W: ptgcn.com

This product is exclusively available under Proteintech Group brand and is not available to purchase from any other manufacturer.

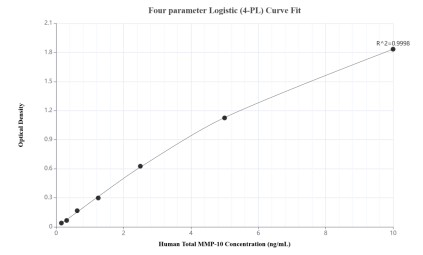
Selected Validation Data



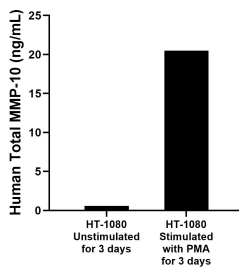
HT-1080 were cultured in DMEM supplemented with 10% fetal bovine serum, 2.5 mM L-glutamine, 100 U/mL penicillin, and 100 µg/mL streptomycin sulfate. An aliquot of the cell culture supernate was removed, assayed for human Total MMP-10, and measured 15.32 ng/mL.



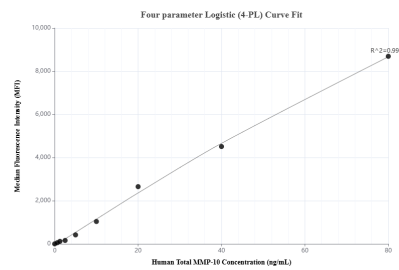
Plasma of six individual healthy human donors was measured. The Total MMP-10 concentration of detected samples was determined to be 1.90 ng/mL with a range of 0.50-4.40 ng/mL.



Sandwich ELISA standard curve of MP02702-2, Human Total MMP-10 Recombinant Matched Antibody Pair - PBS only. 86845-2-PBS was coated to a plate as the capture antibody and incubated with serial dilutions of standard Eg3038. 86845-3-PBS was HRP conjugated as the detection antibody. Range: 0.156-10 ng/mL.



HT-1080 human fibrosarcoma cells were cultured in DMEM with 10% fetal bovine serum, 2 mM L-glutamine, 100 U/mL penicillin, and 100 µg/mL streptomycin sulfate. Cells were stimulated with PMA. An aliquot of the cell culture supernate was removed, assayed for human Total MMP-10, and measured 20.5 ng/mL.



Cytometric bead array standard curve of MP02702-1, Total MMP-10 Recombinant Matched Antibody Pair, PBS Only. Capture antibody: 86845-2-PBS. Detection antibody: 86845-1-PBS. Standard: Eg3038. Range: 0.625-80 ng/mL.