

For Research Use Only

# MMP10 Recombinant monoclonal antibody, PBS Only (Detector)

Catalog Number: 86845-1-PBS



## Basic Information

Catalog Number:

86845-1-PBS

Source:

Rabbit

Isotype:

IgG

Immunogen Catalog Number:

EG3038

GenBank Accession Number:

NM\_002425.3

GeneID (NCBI):

4319

UNIPROT ID:

P09238

Full Name:

matrix metalloproteinase 10  
(stromelysin 2)

Calculated MW:

54 kDa

Purification Method:

Protein A purification

CloneNo.:

251067E10

## Applications

Tested Applications:

Cytometric bead array, Indirect ELISA

Species Specificity:

human

## Background Information

### Storage

Storage:

Store at -80°C.

**The product is shipped with ice packs. Upon receipt, store it immediately at -80°C**

Storage Buffer:

PBS only, pH7.3

For technical support and original validation data for this product please contact:

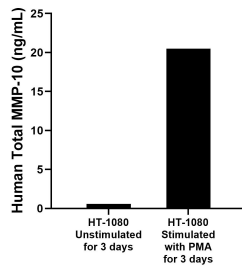
T: 4006900926

E: [Proteintech-CN@ptglab.com](mailto:Proteintech-CN@ptglab.com)

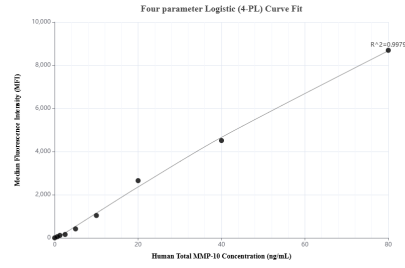
W: [ptgcn.com](http://ptgcn.com)

**This product is exclusively available under Proteintech Group brand and is not available to purchase from any other manufacturer.**

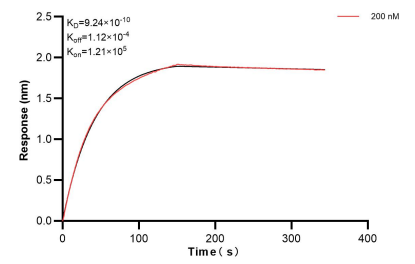
## Selected Validation Data



HT-1080 human fibrosarcoma cells were cultured in DMEM with 10% fetal bovine serum, 2 mM L-glutamine, 100 U/mL penicillin, and 100  $\mu$ g/mL streptomycin sulfate. Cells were stimulated with PMA. An aliquot of the cell culture supernate was removed, assayed for human Total MMP-10, and measured 20.5 ng/mL



Cytometric bead array standard curve of MP02702-1, Total MMP-10 Recombinant Matched Antibody Pair, PBS Only. Capture antibody: 86845-2-PBS. Detection antibody: 86845-1-PBS. Standard: Eg3038. Range: 0.625-80 ng/mL



Bi-layer interferometry (BLI) kinetic assay of 86845-1-PBS against Human MMP10 were performed. The affinity constant is 0.924 nM.