

For Research Use Only

BUB1 Recombinant monoclonal antibody, PBS Only

Catalog Number: 86843-1-PBS



Basic Information

| | | |
|--|---|---|
| Catalog Number: 86843-1-PBS | GenBank Accession Number: BC028201 | Purification Method: Protein A purification |
| Source: Rabbit | GeneID (NCBI): 699 | CloneNo.: 251580F8 |
| Isotype: IgG | UNIPROT ID: O43683 | |
| Immunogen Catalog Number: AG4138 | Full Name: budding uninhibited by benzimidazoles 1 homolog (yeast) | |
| | Calculated MW: 1085 aa, 122 kDa | |
| | Observed MW: 120 kDa | |

Applications

Tested Applications:
WB, Indirect ELISA

Species Specificity:
human

Background Information

Bub1 is an evolutionarily conserved mitotic checkpoint control protein that is present in diverse organisms including yeast and humans. Bub1 is a serine/threonine protein kinase and is required for recruitment of Mad1, Mad2, Bub3, and CENP-E to kinetochores. Full-length Bub1 protein was cleaved to an 45 kDa fragment and an intermediate fragment of 90 kDa, only detected at early stages of apoptosis execution, indicating cleavage of Bub1 in the amino- and carboxy-terminal regions of the protein(PMID:15818396).

Storage

Storage:
Store at -80°C.
The product is shipped with ice packs. Upon receipt, store it immediately at -80°C

Storage Buffer:
PBS only, pH7.3

For technical support and original validation data for this product please contact:

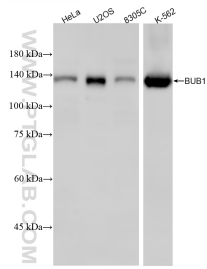
T: 4006900926

E: Proteintech-CN@ptglab.com

W: ptgcn.com

This product is exclusively available under Proteintech Group brand and is not available to purchase from any other manufacturer.

Selected Validation Data



Various lysates were subjected to SDS PAGE followed by western blot with 86843-1-RR (BUB1 antibody) at dilution of 1:2000 incubated at room temperature for 1.5 hours. This data was developed using the same antibody clone with 86843-1-PBS in a different storage buffer formulation.