

For Research Use Only

TOM70 Recombinant monoclonal antibody, PBS Only (Capture)

Catalog Number: 86840-2-PBS



Basic Information

Catalog Number:

86840-2-PBS

Source:

Rabbit

Isotype:

IgG

Immunogen Catalog Number:

AG6027

GenBank Accession Number:

BC052994

GeneID (NCBI):

9868

UNIPROT ID:

O94826

Full Name:

translocase of outer mitochondrial membrane 70 homolog A (S. cerevisiae)

Calculated MW:

67 kDa

Purification Method:

Protein A purification

CloneNo.:

251874D11

Applications

Tested Applications:

Cytometric bead array, Indirect ELISA

Species Specificity:

human

Background Information

Storage

Storage:

Store at -80°C.

The product is shipped with ice packs. Upon receipt, store it immediately at -80°C

Storage Buffer:

PBS only, pH7.3

For technical support and original validation data for this product please contact:

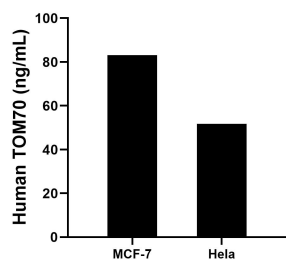
T: 4006900926

E: Proteintech-CN@ptglab.com

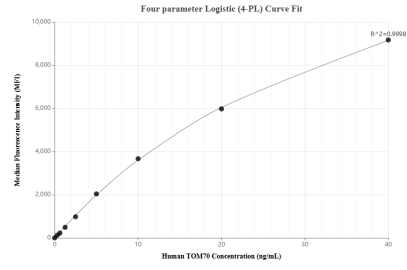
W: ptgcn.com

This product is exclusively available under Proteintech Group brand and is not available to purchase from any other manufacturer.

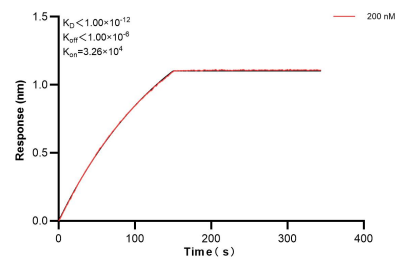
Selected Validation Data



The mean TOM70 concentration was determined to be 83.1 ng/mL in MCF-7 cell extract based on a 1.2 mg/mL extract load, 51.7 ng/mL in HeLa cell extract based on a 1.2 mg/mL extract load.



Cytometric bead array standard curve of MP02700-1, TOM70 Recombinant Matched Antibody Pair, PBS Only. Capture antibody: 86840-2-PBS. Detection antibody: 86840-1-PBS. Standard: Ag6027. Range: 0.312-40 ng/mL.



Biolayer Interferometry (BLI) kinetic assay of 86840-2-PBS against Human TOM70 were performed. The affinity constant is below 1 pM.