

For Research Use Only

PGRMC2 Recombinant monoclonal antibody

Catalog Number: 86835-1-RR



Basic Information

Catalog Number: 86835-1-RR	GenBank Accession Number: BC016692	Purification Method: Protein A purification
Source: Rabbit	GeneID (NCBI): 10424	CloneNo.: 251819A8
Isotype: IgG	UNIPROT ID: O15173	Recommended Dilutions: WB: 1:2000-1:10000 IHC: 1:2500-1:10000 IF/ICC: 1:250-1:1000
Immunogen Catalog Number: AG20077	Full Name: progesterone receptor membrane component 2	
	Calculated MW: 223 aa, 24 kDa	
	Observed MW: 24 kDa, 28 kDa	

Applications

Tested Applications:
WB, IHC, IF/ICC, ELISA

Species Specificity:
human, mouse

Note-IHC: suggested antigen retrieval with TE buffer pH 9.0; (*) Alternatively, antigen retrieval may be performed with citrate buffer pH 6.0

Positive Controls:

WB: HeLa cells, ARPE-19 cells, HepG2 cells, MDA-MB-231 cells, NIH/3T3 cells, 3T3-L1 cells

IHC: human placenta tissue,

IF/ICC: HeLa cells,

Background Information

Membrane-associated progesterone receptor component 2 (PGRMC2), also known as DG6 or PMBP, belongs to the cytochrome b5 family. This protein might play a role in cancer. The gene of PGRMC2 maps to chromosome 4q26, and encodes a 223-amino acid single-pass membrane protein with a cytochrome b5 heme-binding domain in its cytoplasmic domain. PGRMC2 has a calculated molecular weight of 24 kDa. The band of about 28 kDa detected by this antibody is unknown but may represent phosphorylated form of PGRMC2 (PMID: 28104494).

Storage

Storage:

Store at -20°C. Stable for one year after shipment.

Storage Buffer:

PBS with 0.02% sodium azide and 50% glycerol, pH7.3

Aliquoting is unnecessary for -20°C storage

For technical support and original validation data for this product please contact:

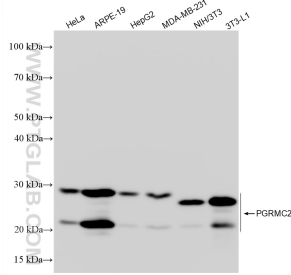
T: 4006900926

E: Proteintech-CN@ptglab.com

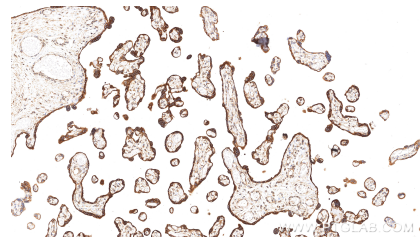
W: ptgcn.com

This product is exclusively available under Proteintech Group brand and is not available to purchase from any other manufacturer.

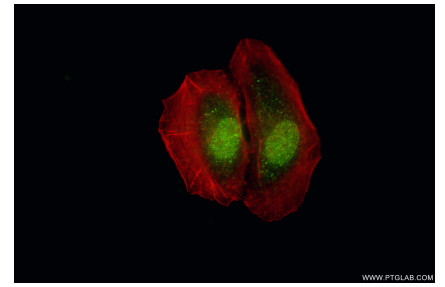
Selected Validation Data



Various lysates were subjected to SDS PAGE followed by western blot with 86835-1-RR (PGRMC2 antibody) at dilution of 1:5000 incubated at room temperature for 1.5 hours.



Immunohistochemical analysis of paraffin-embedded human placenta tissue slide using 86835-1-RR (PGRMC2 antibody) at dilution of 1:5000 (under 10x lens). Heat mediated antigen retrieval with Tris-EDTA buffer (pH 9.0).



Immunofluorescent analysis of (4% PFA) fixed HeLa cells using PGRMC2 antibody (86835-1-RR, Clone: 251819A8) at dilution of 1:500 and CoraLite®488-Conjugated Goat Anti-Rabbit IgG(H+L) (SA00013-2), CL594-Phalloidin (red).