

For Research Use Only

EGR2 Recombinant monoclonal antibody, PBS Only (Detector)

Catalog Number: 86834-2-PBS



Basic Information

Catalog Number:

86834-2-PBS

Source:

Rabbit

Isotype:

IgG

Immunogen Catalog Number:

AG40479

GenBank Accession Number:

BC035625

GeneID (NCBI):

1959

UNIPROT ID:

P11161

Full Name:

early growth response 2 (Krox-20 homolog, Drosophila)

Calculated MW:

476 aa, 50 kDa

Purification Method:

Protein A purification

CloneNo.:

251735E4

Applications

Tested Applications:

Sandwich ELISA, Indirect ELISA

Species Specificity:

human

Background Information

Storage

Storage:

Store at -80°C.

The product is shipped with ice packs. Upon receipt, store it immediately at -80°C

Storage Buffer:

PBS only, pH7.3

For technical support and original validation data for this product please contact:

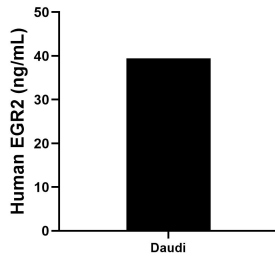
T: 4006900926

E: Proteintech-CN@ptglab.com

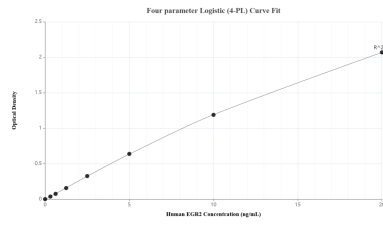
W: ptgcn.com

This product is exclusively available under Proteintech Group brand and is not available to purchase from any other manufacturer.

Selected Validation Data



The mean EGR2 concentration was determined to be 39.45 ng/mL in Daudi cell extract based on a 1.10 mg/mL extract load.



Sandwich ELISA standard curve of MP02751-1, Human EGR2 Recombinant Matched Antibody Pair - PBS only. 86834-3-PBS was coated to a plate as the capture antibody and incubated with serial dilutions of standard Ag40479. 86834-2-PBS was HRP conjugated as the detection antibody. Range: 0.313-20 ng/mL