

For Research Use Only

LTBR Recombinant monoclonal antibody, PBS Only (Capture)

Catalog Number:86823-3-PBS



Basic Information

Catalog Number: 86823-3-PBS	GenBank Accession Number: BC026262	Purification Method: Protein A purification
Source: Rabbit	GeneID (NCBI): 4055	CloneNo.: 251739C1
Isotype: IgG	UNIPROT ID: P36941	
Immunogen Catalog Number: EG5126	Full Name: lymphotoxin beta receptor (TNFR superfamily, member 3)	
	Calculated MW: 435 aa, 47 kDa	

Applications

Tested Applications:
Cytometric bead array, Sandwich ELISA, Indirect ELISA

Species Specificity:
human

Background Information

Storage

Storage:
Store at -80°C.
The product is shipped with ice packs. Upon receipt, store it immediately at -80°C

Storage Buffer:
PBS only, pH7.3

For technical support and original validation data for this product please contact:

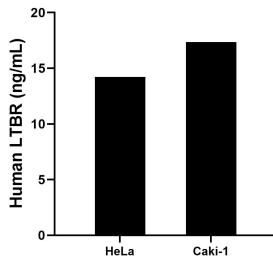
T: 4006900926

E: Proteintech-CN@ptglab.com

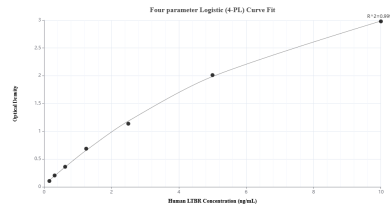
W: ptgcn.com

This product is exclusively available under Proteintech Group brand and is not available to purchase from any other manufacturer.

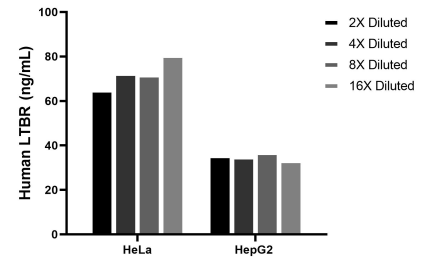
Selected Validation Data



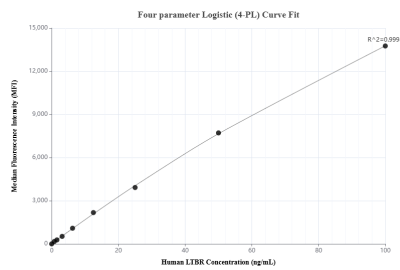
The mean LTBR concentration was determined to be 14.22 ng/mL in HeLa cell extract based on a 1.2 mg/mL extract load and 17.35 ng/mL in Caki-1 cell extract based on a 1.2 mg/mL extract load.



Sandwich ELISA standard curve of MP02693-2, Human LTBR Recombinant Matched Antibody Pair - PBS only. 86823-3-PBS was coated to a plate as the capture antibody and incubated with serial dilutions of standard Eg5126. 86823-4-PBS was HRP conjugated as the detection antibody. Range: 0.156-10 ng/mL



The mean LTBR concentration was determined to be 72.3 ng/mL in HeLa cell extract based on a 1.2 mg/mL extract load, 35.0 ng/mL in HepG2 cell extract based on a 1.2 mg/mL extract load.



Cytometric bead array standard curve of MP02693-1, LTBR Recombinant Matched Antibody Pair, PBS Only. Capture antibody: 86823-3-PBS. Detection antibody: 86823-2-PBS. Standard: Eg5126. Range: 0.781-100 ng/mL