

For Research Use Only

ZFC3H1 Recombinant monoclonal antibody, PBS Only (Capture)

Catalog Number: 86822-3-PBS



Basic Information

Catalog Number:

86822-3-PBS

Source:

Rabbit

Isotype:

IgG

Immunogen Catalog Number:

AG34224

GenBank Accession Number:

BC156732

GeneID (NCBI):

196441

UNIPROT ID:

O60293

Full Name:

zinc finger, C3H1-type containing

Calculated MW:

226 kDa

Purification Method:

Protein A purification

CloneNo.:

251814B4

Applications

Tested Applications:

Sandwich ELISA, Indirect ELISA

Species Specificity:

human

Background Information

Storage

Storage:

Store at -80°C.

The product is shipped with ice packs. Upon receipt, store it immediately at -80°C

Storage Buffer:

PBS only, pH7.3

For technical support and original validation data for this product please contact:

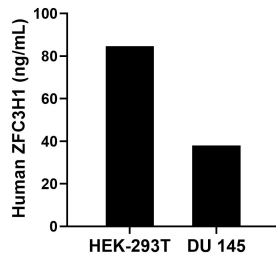
T: 4006900926

E: Proteintech-CN@ptglab.com

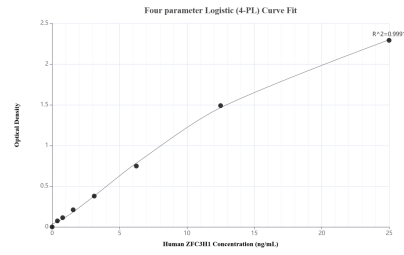
W: ptgcn.com

This product is exclusively available under Proteintech Group brand and is not available to purchase from any other manufacturer.

Selected Validation Data



The mean ZFC3H1 concentration was determined to be 84.63 ng/mL in HEK-293T cell extract based on a 1.30 mg/mL extract load and 38.02 ng/mL in DU 145 cell extract based on a 5.40 mg/mL extract load.



Sandwich ELISA standard curve of MP02807-1, Human ZFC3H1 Recombinant Matched Antibody Pair - PBS only. 86822-3-PBS was coated to a plate as the capture antibody and incubated with serial dilutions of standard Ag34224. 86822-2-PBS was HRP conjugated as the detection antibody. Range: 0.391-25 ng/mL