

For Research Use Only

# ZFC3H1 Recombinant monoclonal antibody, PBS Only (Detector)

Catalog Number:86822-2-PBS



## Basic Information

<b>Catalog Number:</b> 86822-2-PBS	<b>GenBank Accession Number:</b> BC156732	<b>Purification Method:</b> Protein A purification
<b>Source:</b> Rabbit	<b>GeneID (NCBI):</b> 196441	<b>CloneNo.:</b> 251814E5
<b>Isotype:</b> IgG	<b>UNIPROT ID:</b> O60293	
<b>Immunogen Catalog Number:</b> AG34224	<b>Full Name:</b> zinc finger, C3H1-type containing	
	<b>Calculated MW:</b> 226 kDa	

## Applications

**Tested Applications:**  
Sandwich ELISA, Indirect ELISA

**Species Specificity:**  
human

## Background Information

### Storage

**Storage:**  
Store at -80°C.  
**The product is shipped with ice packs. Upon receipt, store it immediately at -80°C**

**Storage Buffer:**  
PBS only, pH7.3

For technical support and original validation data for this product please contact:

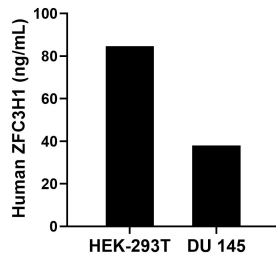
T: 4006900926

E: Proteintech-CN@ptglab.com

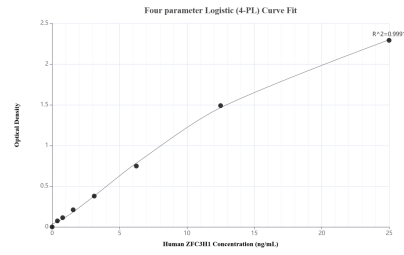
W: ptgcn.com

**This product is exclusively available under Proteintech Group brand and is not available to purchase from any other manufacturer.**

## Selected Validation Data



The mean ZFC3H1 concentration was determined to be 84.63 ng/mL in HEK-293T cell extract based on a 1.30 mg/mL extract load and 38.02 ng/mL in DU 145 cell extract based on a 5.40 mg/mL extract load.



Sandwich ELISA standard curve of MP02807-1, Human ZFC3H1 Recombinant Matched Antibody Pair - PBS only. 86822-3-PBS was coated to a plate as the capture antibody and incubated with serial dilutions of standard Ag34224. 86822-2-PBS was HRP conjugated as the detection antibody. Range: 0.391-25 ng/mL