

For Research Use Only

IGF-II R/IGF2R Recombinant monoclonal antibody, PBS Only (Detector)

Catalog Number:86821-4-PBS



Basic Information

Catalog Number:

86821-4-PBS

Source:

Rabbit

Isotype:

IgG

Immunogen Catalog Number:

EG3488

GenBank Accession Number:

NM_000876.4

GeneID (NCBI):

3482

UNIPROT ID:

P11717

Full Name:

insulin-like growth factor 2 receptor

Calculated MW:

274 kDa

Purification Method:

Protein A purification

CloneNo.:

251265B6

Applications

Tested Applications:

Sandwich ELISA, Indirect ELISA

Species Specificity:

human

Background Information

Storage

Storage:

Store at -80°C.

The product is shipped with ice packs. Upon receipt, store it immediately at -80°C

Storage Buffer:

PBS only, pH7.3

For technical support and original validation data for this product please contact:

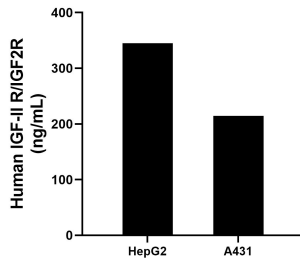
T: 4006900926

E: Proteintech-CN@ptglab.com

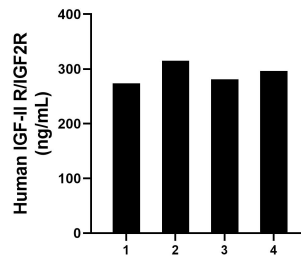
W: ptgcn.com

This product is exclusively available under Proteintech Group brand and is not available to purchase from any other manufacturer.

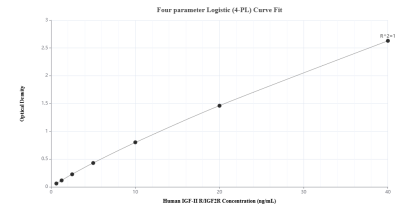
Selected Validation Data



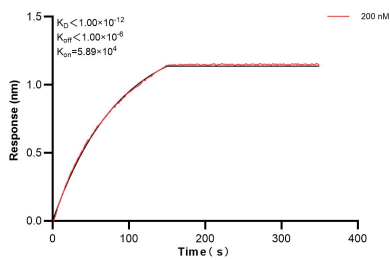
The mean IGF-II R/IGF2R concentration was determined to be 344.83 ng/mL in HepG2 cell extract based on a 1.2 mg/mL extract load and 214.23 ng/mL in A431 cell extract based on a 1.2 mg/mL extract load.



Serum of four individual healthy human donors was measured. The human IGF-II R/IGF2R concentration of detected samples was determined to be 291.46 ng/mL with a range of 273.79 - 315.06 ng/mL.



Sandwich ELISA standard curve of MP02694-2, Human IGF-II R/IGF2R Recombinant Matched Antibody Pair - PBS only. 86821-3-PBS was coated to a plate as the capture antibody and incubated with serial dilutions of standard Eg3488. 86821-4-PBS was HRP conjugated as the detection antibody. Range: 0.625-40 ng/mL



Biolayer interferometry (BLI) kinetic assays of 86821-4-PBS against Human IGF-II R/IGF2R were performed. The affinity constant is below 1 pM.