

For Research Use Only

IGF-II R/IGF2R Recombinant monoclonal antibody, PBS Only (Detector)

Catalog Number:86821-2-PBS



Basic Information

Catalog Number: 86821-2-PBS	GenBank Accession Number: NM_000876.4	Purification Method: Protein A purification
Concentration: 1 mg/ml	GeneID (NCBI): 3482	CloneNo.: 251265G7
Source: Rabbit	UNIPROT ID: P11717	
Isotype: IgG	Full Name: insulin-like growth factor 2 receptor	
Immunogen Catalog Number: EG3488	Calculated MW: 274 kDa	

Applications

Tested Applications:
Cytometric bead array, Indirect ELISA

Species Specificity:
human

Background Information

Storage

Storage:
Store at -80°C.
The product is shipped with ice packs. Upon receipt, store it immediately at -80°C

Storage Buffer:
PBS only, pH7.3

For technical support and original validation data for this product please contact:

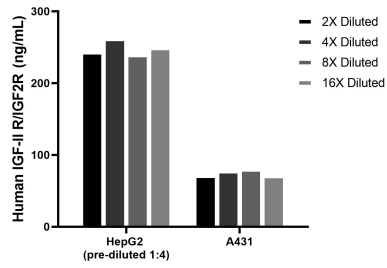
T: 4006900926

E: Proteintech-CN@ptglab.com

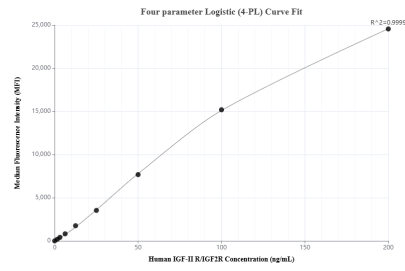
W: ptgcn.com

This product is exclusively available under Proteintech Group brand and is not available to purchase from any other manufacturer.

Selected Validation Data



The mean IGF-II R/IGF2R concentration was determined to be 248.2 ng/mL in HepG2 cell extract based on a 1.2 mg/mL extract load, 74.7 ng/mL in A431 cell extract based on a 1.2 mg/mL extract load.



Cytometric bead array standard curve of MP02694-1, IGF-II R/IGF2R Recombinant Matched Antibody Pair, PBS Only. Capture antibody: 86821-3-PBS. Detection antibody: 86821-2-PBS. Standard: Eg3488. Range: 1.562-200 ng/mL.