

For Research Use Only

IGF-II R/IGF2R Recombinant monoclonal antibody

Catalog Number: 86821-1-RR



Basic Information

| | | |
|--|--|---|
| Catalog Number: 86821-1-RR | GenBank Accession Number: NM_000876.4 | Purification Method: Protein A purification |
| Source: Rabbit | GeneID (NCBI): 3482 | CloneNo.: 251265D1 |
| Isotype: IgG | UNIPROT ID: P11717 | Recommended Dilutions: WB: 1:500-1:2000 IF/ICC: 1:250-1:1000 |
| Immunogen Catalog Number: EG3488 | Full Name: insulin-like growth factor 2 receptor | |
| | Calculated MW: 274 kDa | |
| | Observed MW: 300 kDa | |

Applications

| | |
|--|--|
| Tested Applications: WB, IF/ICC, ELISA | Positive Controls: WB : HepG2 cells, Jurkat cells, HEK-293 cells |
| Species Specificity: human | IF/ICC : HepG2 cells, |

Background Information

IGF2R, also named as MPRI, CI Man-6-P receptor, CI-MPR, M6PR, IGF-II receptor, M6P/IGF2R, MPR 300 and CD222, belongs to the MRL1/IGF2R family. IGF2R transports of phosphorylated lysosomal enzymes from the Golgi complex and the cell surface to lysosomes. IGF2R is a lysosomal enzymes bearing phosphomannosyl residues bind specifically to mannose-6-phosphate receptors in the Golgi apparatus and the resulting receptor-ligand complex is transported to an acidic prelysosomal compartment where the low pH mediates the dissociation of the complex. This receptor also binds IGF2. IGF2R acts as a positive regulator of T-cell coactivation, by binding DPP4.

Storage

Storage:
Store at -20°C. Stable for one year after shipment.
Storage Buffer:
PBS with 0.02% sodium azide and 50% glycerol, pH7.3
Aliquoting is unnecessary for -20°C storage

For technical support and original validation data for this product please contact:

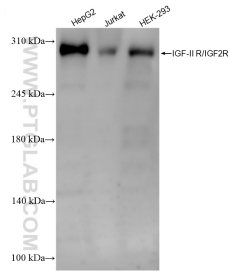
T: 4006900926

E: Proteintech-CN@ptglab.com

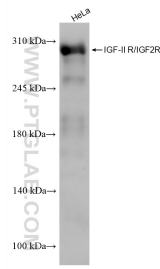
W: ptgcn.com

This product is exclusively available under Proteintech Group brand and is not available to purchase from any other manufacturer.

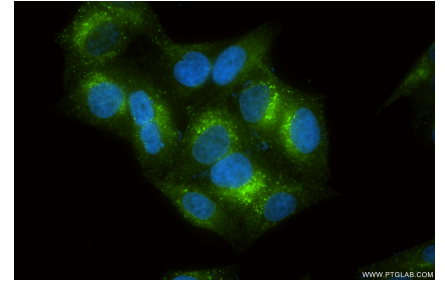
Selected Validation Data



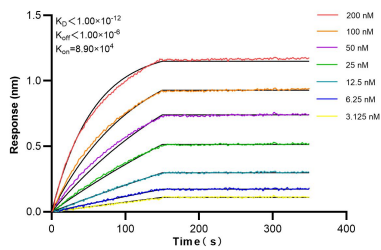
Various lysates were subjected to SDS PAGE followed by western blot with 86821-1-RR (IGF-II R/IGF2R antibody) at dilution of 1:1000 incubated at room temperature for 1.5 hours.



HeLa cells were subjected to SDS PAGE followed by western blot with 86821-1-RR (IGF-II R/IGF2R antibody) at dilution of 1:1000 incubated at room temperature for 1.5 hours.



Immunofluorescent analysis of (4% PFA) fixed HepG2 cells using IGF-II R/IGF2R antibody (86821-1-RR, Clone: 251265D1) at dilution of 1:500 and CoraLite®488-Conjugated Goat Anti-Rabbit IgG(H+L) (SA00013-2).



Biolayer interferometry (BLI) kinetic assays of 86821-1-RR against Human IGF-II R/IGF2R were performed. The affinity constant is below 1 pM.