

For Research Use Only

ENSA Recombinant monoclonal antibody

Catalog Number:86820-1-RR



Basic Information

Catalog Number:

86820-1-RR

Source:

Rabbit

Isotype:

IgG

Immunogen Catalog Number:

AG14484

GenBank Accession Number:

BC004461

GeneID (NCBI):

2029

UNIPROT ID:

O43768

Full Name:

endosulfine alpha

Calculated MW:

14 kDa

Observed MW:

15-19 kDa

Purification Method:

Protein A purification

CloneNo.:

251820D6

Recommended Dilutions:

WB: 1:2000-1:10000

IF/ICC: 1:200-1:800

Applications

Tested Applications:

WB, IF/ICC, ELISA

Species Specificity:

human

Positive Controls:

WB : SK-BR-3 cells, U2OS cells

IF/ICC : COLO 320 cells,

Background Information

Storage

Storage:

Store at -20°C. Stable for one year after shipment.

Storage Buffer:

PBS with 0.02% sodium azide and 50% glycerol, pH7.3

Aliquoting is unnecessary for -20°C storage

For technical support and original validation data for this product please contact:

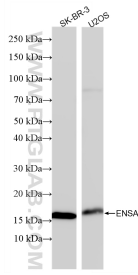
T: 4006900926

E: Proteintech-CN@ptglab.com

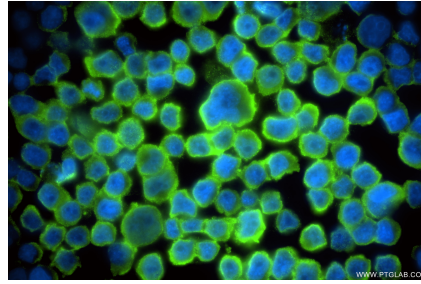
W: ptgcn.com

This product is exclusively available under Proteintech Group brand and is not available to purchase from any other manufacturer.

Selected Validation Data



Various lysates were subjected to SDS PAGE followed by western blot with 86820-1-RR (ENSA antibody) at dilution of 1:5000 incubated at room temperature for 1.5 hours.



Immunofluorescent analysis of (4% PFA) fixed COLO 320 cells using ENSA antibody (86820-1-RR, Clone: 251820D6) at dilution of 1:400 and CoraLite® 488-Conjugated Goat Anti-Rabbit IgG(H+L) (SA00013-2).