

For Research Use Only

ENSA Recombinant monoclonal antibody, PBS Only

Catalog Number:86820-1-PBS



Basic Information

Catalog Number:

86820-1-PBS

Source:

Rabbit

Isotype:

IgG

Immunogen Catalog Number:

AG14484

GenBank Accession Number:

BC004461

GeneID (NCBI):

2029

UNIPROT ID:

O43768

Full Name:

endosulfine alpha

Calculated MW:

14 kDa

Observed MW:

15-19 kDa

Purification Method:

Protein A purification

CloneNo.:

251820D6

Applications

Tested Applications:

WB, IF/ICC, Indirect ELISA

Species Specificity:

human

Background Information

Storage

Storage:

Store at -80°C.

The product is shipped with ice packs. Upon receipt, store it immediately at -80°C

Storage Buffer:

PBS only, pH7.3

For technical support and original validation data for this product please contact:

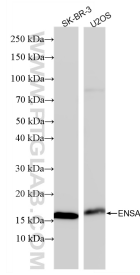
T: 4006900926

E: Proteintech-CN@ptglab.com

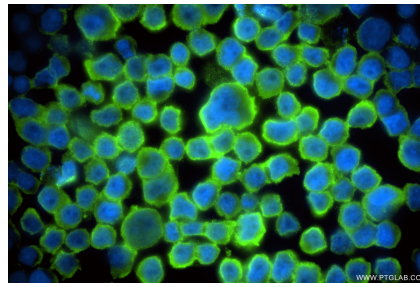
W: ptgcn.com

This product is exclusively available under Proteintech Group brand and is not available to purchase from any other manufacturer.

Selected Validation Data



Various lysates were subjected to SDS PAGE followed by western blot with 86820-1-RR (ENSA antibody) at dilution of 1:5000 incubated at room temperature for 1.5 hours. This data was developed using the same antibody clone with 86820-1-PBS in a different storage buffer formulation.



Immunofluorescent analysis of (4% PFA) fixed COLO 320 cells using ENSA antibody (86820-1-RR, Clone: 251820D6) at dilution of 1:400 and CoraLite® 488-Conjugated Goat Anti-Rabbit IgG(H+L) (SA00013-2). This data was developed using the same antibody clone with 86820-1-PBS in a different storage buffer formulation.